



SMART BALANCER

SMART BALANCER MAKES WINDPROOF
ROLLER BLINDS MORE DURABLE



Scan public accounts

GUANGZHOU NEWHOO TECHNOLOGY CO.,LTD

Address: Building 7, Hongyu Zhihui Industrial Park,
333 Juhuashi Avenue, Huadu District, Guangzhou
Tel:020-36326223
Fax:+86-20-36326739
E-mail:sales@gznewhoo.com
Web:www.gznewhoo.com

NEWHOO®

CREATE THE BEST CHINESE
SUPPLIER OF OUTDOOR SHADING MATERIAL



GUANGZHOU NEWHOO
TECHNOLOGY CO.,LTD

NEWHOO®

CREATE THE BEST CHINESE
SUPPLIER OF OUTDOOR SHADING MATERIAL



BRAND STORY

GUANGZHOU NEWHOO TECHNOLOGY CO.,LTD

Was founded in 2015.

We are focused on outdoor shading, based on the industry pain point, innovation and create value, only provide quality products;

It's a research, design, development, production and sales integrated enterprises;

It's a profession manufacturer can provide independent intellectual property solutions for outdoor shading products;

It's a national high-tech enterprise with more than 30 patented technologies such as invention, model and appearance;

It's a company rich of outdoor shading products series, can provide both finished products and materials.

NEWHOO

ENTERPRISE CULTURE

Business philosophy	Team Unity, hard work, equality, and win-win situation;
Corporate values	Everyone is equal in the system, and everyone is equal in performance;
Concept of competition	Differentiation, refinement, and standardization ;
Corporate vision	Create the best chinese supplier of outdoor shading material
Foundation of management	Innovation creates value, value determines price, hard work ensures success, continuous achievement of brilliance, integrity ensures persistence, and respect leads to happiness;
Employment concept	The concept of being inclusive of all rivers, possessing both morality and talent, and measuring talents;
Management concept	Correct management philosophy and methods, striving for efficiency, scientific standardization, systematic improvement, teamwork, and excellent efficiency;
R&D concept	Base on industry pain points, independent intellectual property rights, differentiated solutions;
Quality policy	Quality is based on technological innovation, continuous improvement, excellence in quality, honest management, and customer satisfaction!

Company Introduction

20

More than 20 years of industry research and development experience

30

More than 30 national patented technologies

60

More than 60 other related products National patented technology hnologies

Guangzhou newhoo technology co.,ltd. was founded in 2015, is a focus on outdoor shading materials And finished products of the enterprise. The company is located in Hongyu Zhihui Industrial Park, 16KM north of Guangzhou Baiyun Airport, Daguang, Pearl River Delta Ring Line, Leguang and other highways intersection, the company has 10,000 square meters of modern factory buildings.

NEWHOO technology focus on outdoor sunshade products, with more than 20 years of industry experience in R & D, production team. And more than 30 outdoor sunshade products such as windproof curtains and more than 60 other related products of the national patent technology. Independent intellectual property rights, products are well known to the industry, exported to Europe, America, Australia, Southeast Asia and other regions.

NEWHOO Technology based on its own intellectual property products, a wide range of ODM, OEM and other services.

In line with the product development and production concept of creating value through innovation and making outdoor sunshade products last longer, we strive to create "China's best supplier of outdoor sunshade materials."



CREATE THE BEST CHINESE OUTDOOR SHADING MATERIAL SUPPLIER



NEWHOO®

We(Newhoo):

Only provide competitive products and services for enterprise with high quality requirements. Only provide quality products and service for tasteful users.

Vince Qin

INNOVATION CREATES VALUE
MAIN INTELLECTUAL PROPERTY



CONTENTS

01 NEWHOO

Brand story	01/02
Enterprise culture	03/04
Company introduction	05/06
Product positioning	07/08
Independent intellectual property	09/10
Contents	11/12

02 CORE TECHNOLOGY

Core technology	13/24
-----------------------	-------

03 WINDPROOF ROLLER BLINDS

WR120 windproof roller blinds system	27/30
WR120C windproof roller blind (connectable) system	31/32
WR110 windproof roller blinds system	33/38
WR100 windproof roller blinds system	39/44
WR130-180 Double windproof roller blinds system	45/50
WR120-140 windproof Blinds system	51/54
WR85 windproof roller blinds system	55/60
C28-WR100B windproof roller blinds system	61/66
WR150-220 double windproof roller blinds system	67/72

04 AWNING SYSTEM

TW001 Awning system	73/76
Awning fabric system for sunroom	77/78

05 BASIC REQUIREMENTS FOR WINDPROOF ROLLER BLINDS

Basic requirements for windproof roller blinds	79/80
---	-------

06 WINDPROOF ROLLER BLINDS FABRIC

Windproof roller blinds fabric	81/85
--------------------------------------	-------

07 MEASUREMENT AND INSTALLATION

Measurement and installation	86/90
------------------------------------	-------

08 WIND PERFORMANCE TEST REPORT

Wind performance test report	91/92
------------------------------------	-------

09 WINDPROOF ROLLER BLINDS APPLICATION CASE

Windproof roller blind application case	93/94
---	-------

NEWHOO®

CORE TECHNOLOGY

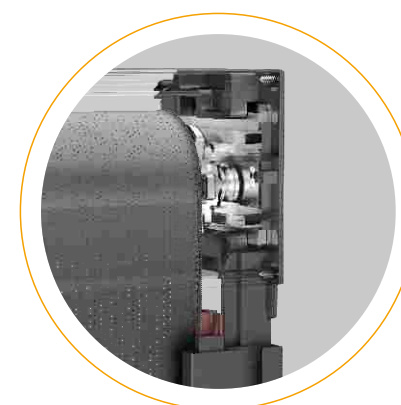
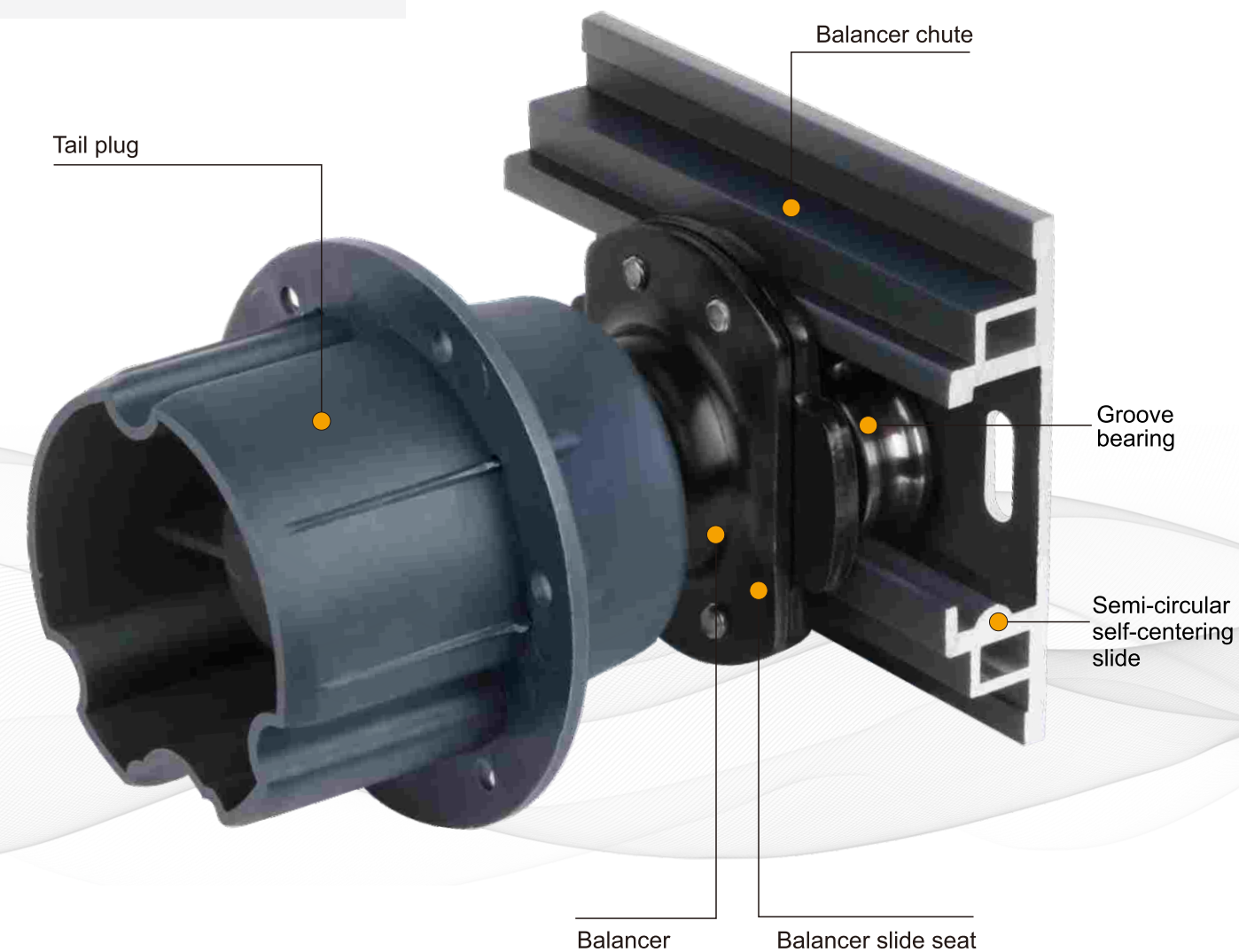
Core technology

01

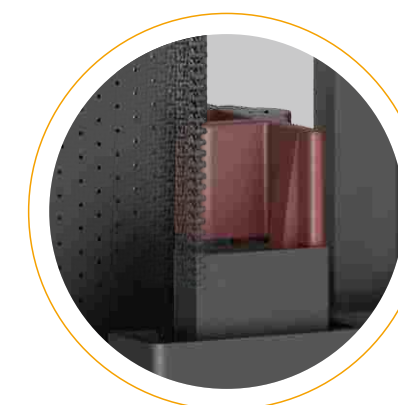
Smart balancer make the
windproof roller blinds
more durable

Patent number: 202010010690.4

Patent number: 2020 22 2353 85



Zipper vertically into the zipper guide rail,
the whole process of care, the fabric is more flat

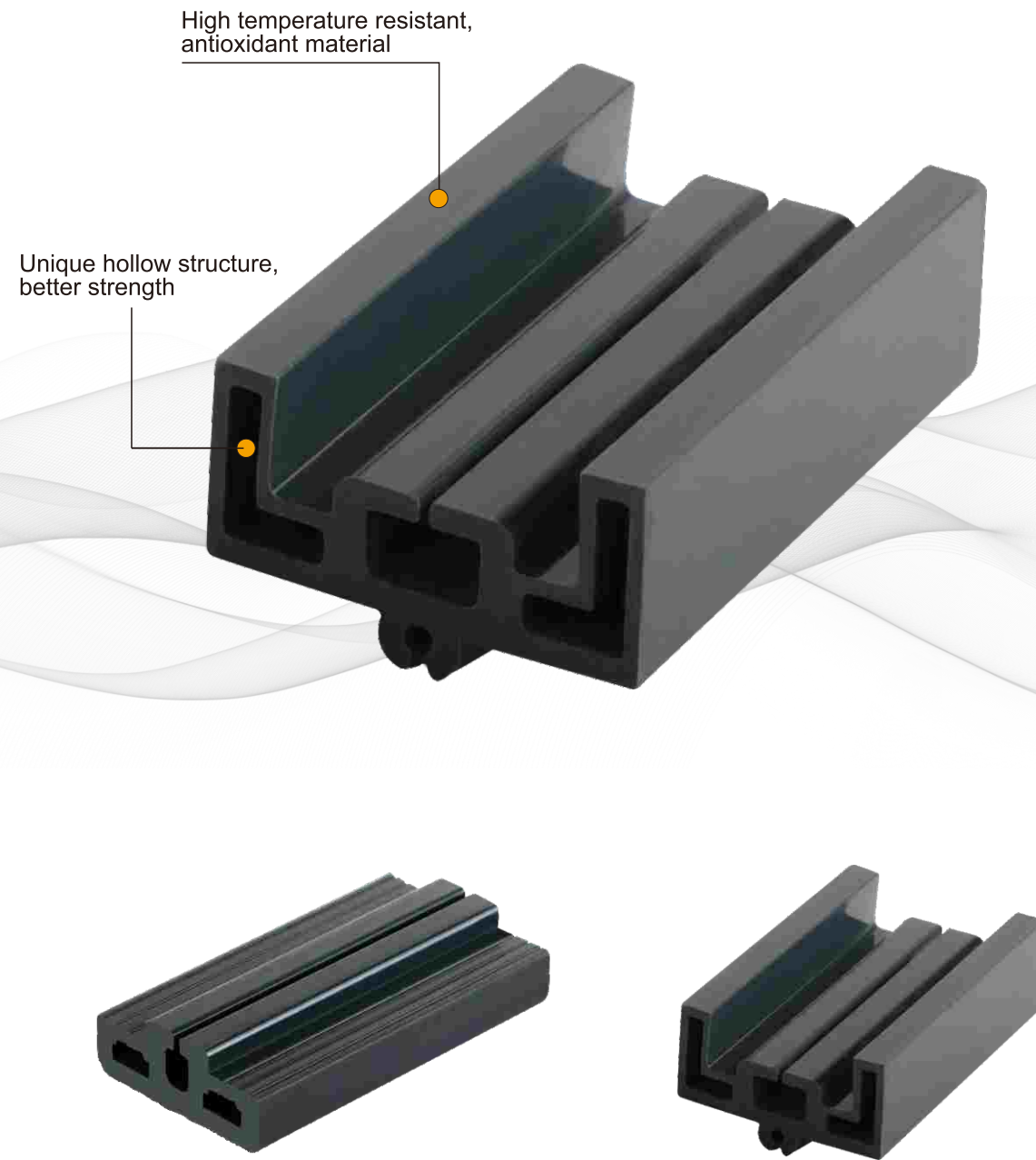


Core technology

02

Hollow structure
High temperature
resistant zipper guide
Keep the zipper stable

Patent number: 2021308068060

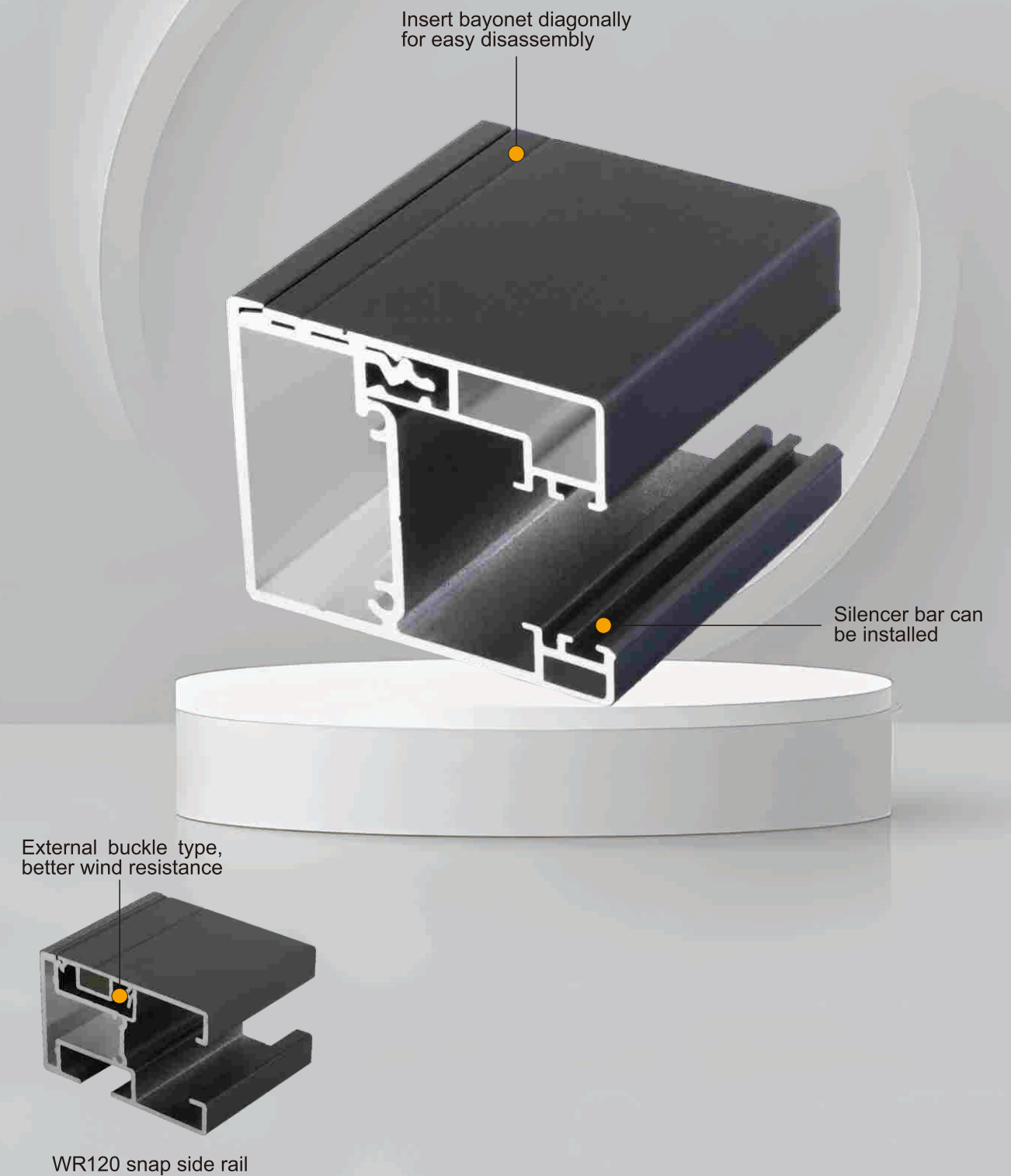


Core technology

03

No screws installation
side rail, more convenient
disassembly

Patent number: ZL2021207067027



Core technology

04

**Fabric oriented
technique,
Make the
windproof roller blind
more flat**

Patent number: ZL202130560744.X



- ▶ Equipped with wear-resistant nanostrips to reduce fabric friction noise;
- ▶ At the same time will face the zipper vertical direction into the guide rail;
- ▶ Nanostrip assisted, the balancer automatically adjusts the center position according to the amount of the winding of the fabric to ensure that the fabric is protected with a small Angle to ensure life;

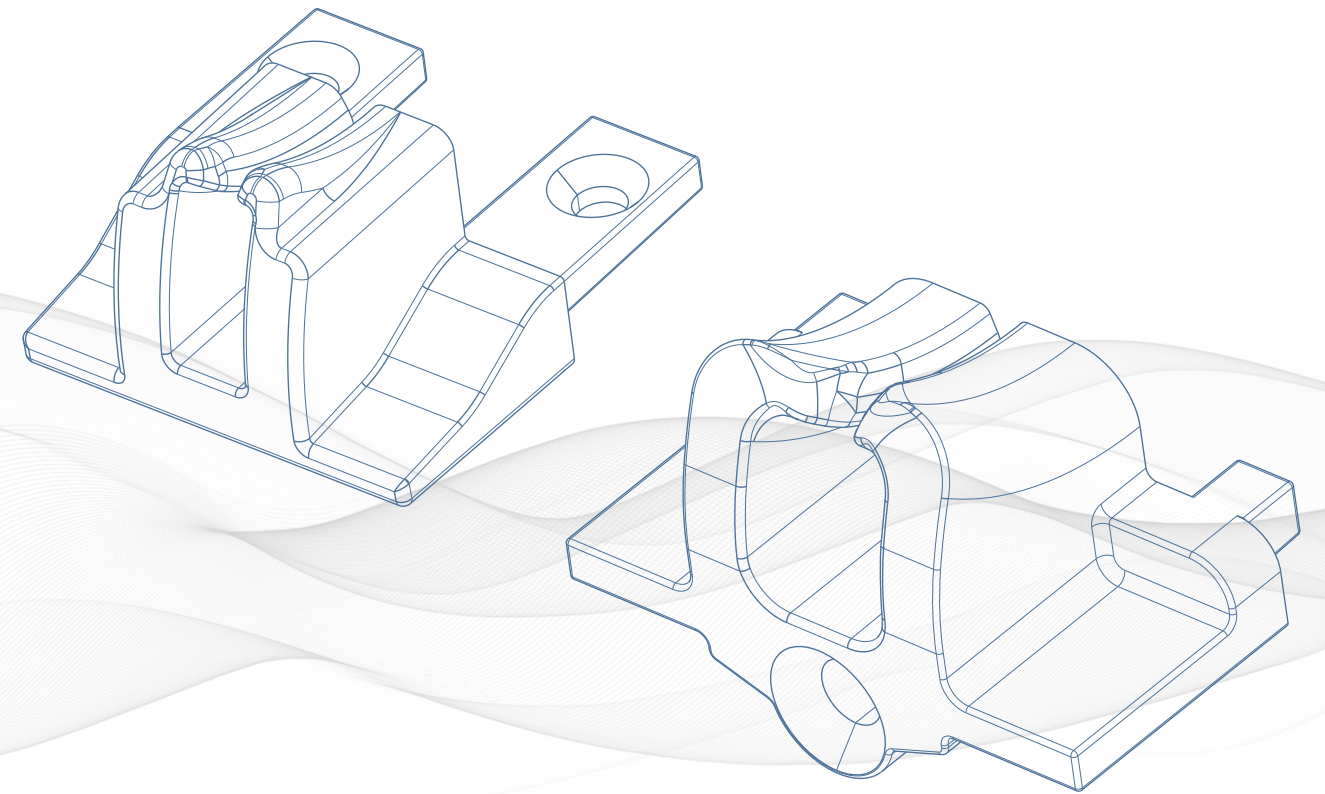
Core technology

05

**Metal zipper rail end plug,
Make the windproof roller
blinds better wind
resistance**

Patent number:2021 3080 68060

Patent number:2021 3080 68037

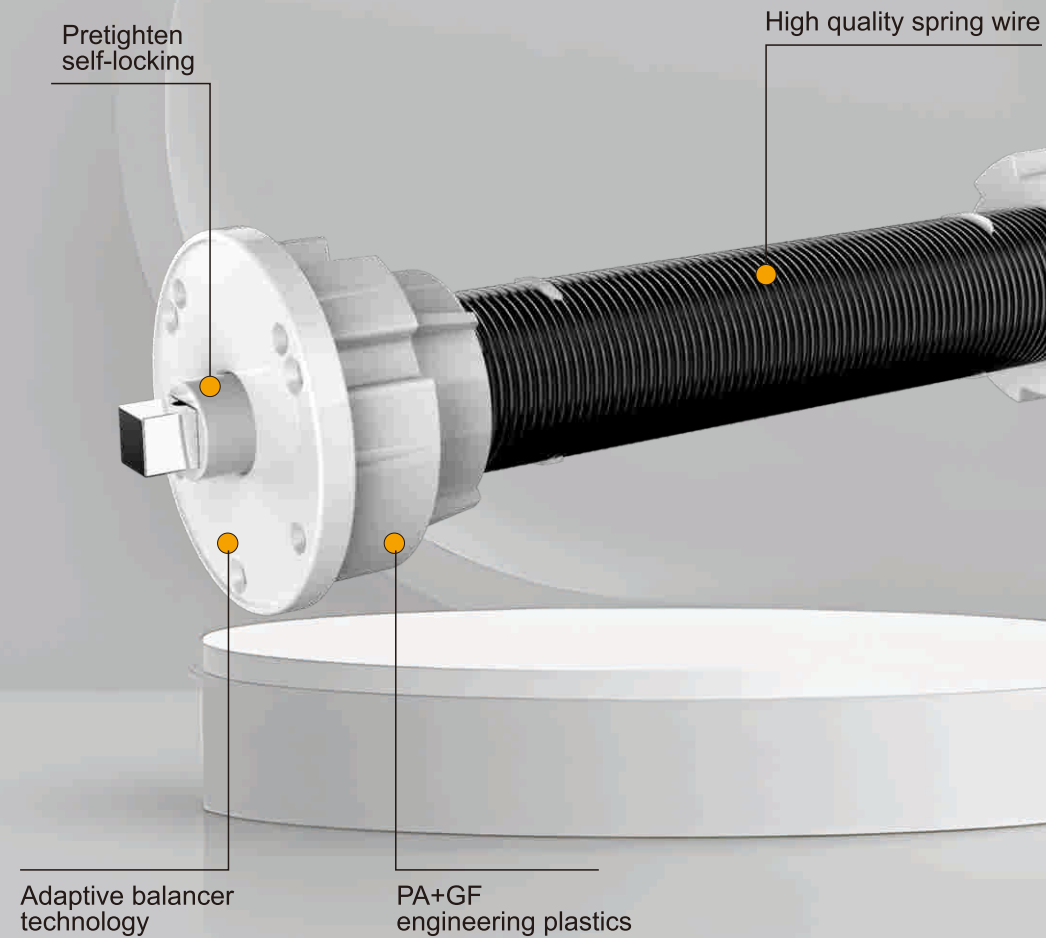


Core technology

06

Self-balancing adjusting
spring system,
Let's push the windproof
roller blinds
where we want it

Patent number: 2019223445370



Core technology

07

Extra heavy duty windproof
roller blinds
Special chain windproof
roller blinds system, so
that the operation is easy



Bearing capacity up to 15kg,
More than 70% labor saving

Core technology

08

Electric, hand push, chain
control hand crank
Full range of product system,
meet Requirements for different
Installation environments



Adaptive balancer spring system for more applications
of hand push systems



Can be adapted to multi-brand, multi-specification
motor system



Great effort saving chain system, chain
windproof roller blinds are also easy

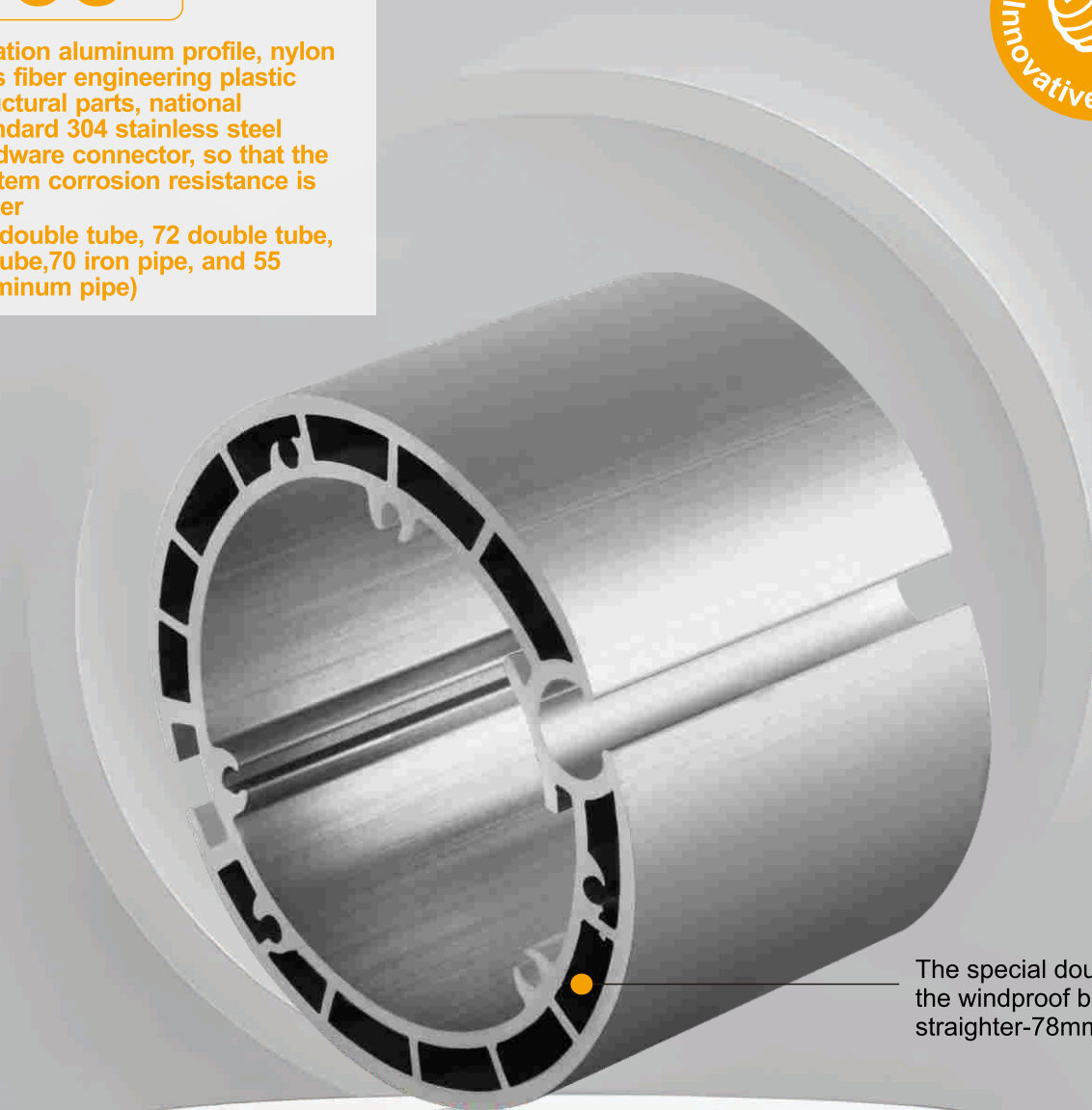


A wide range of hand-crank

Core technology

09

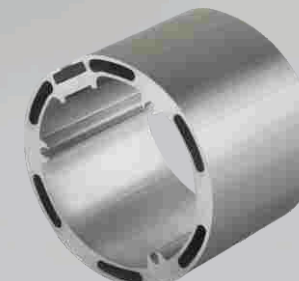
Aviation aluminum profile, nylon
plus fiber engineering plastic
structural parts, national
standard 304 stainless steel
hardware connector, so that the
system corrosion resistance is
better
(78 double tube, 72 double tube,
63 tube, 70 iron pipe, and 55
aluminum pipe)



The special double tube makes
the windproof blinds wider and
straighter-78mm tube



63 tube



72 double tube



70 Iron pipe

Core technology

10

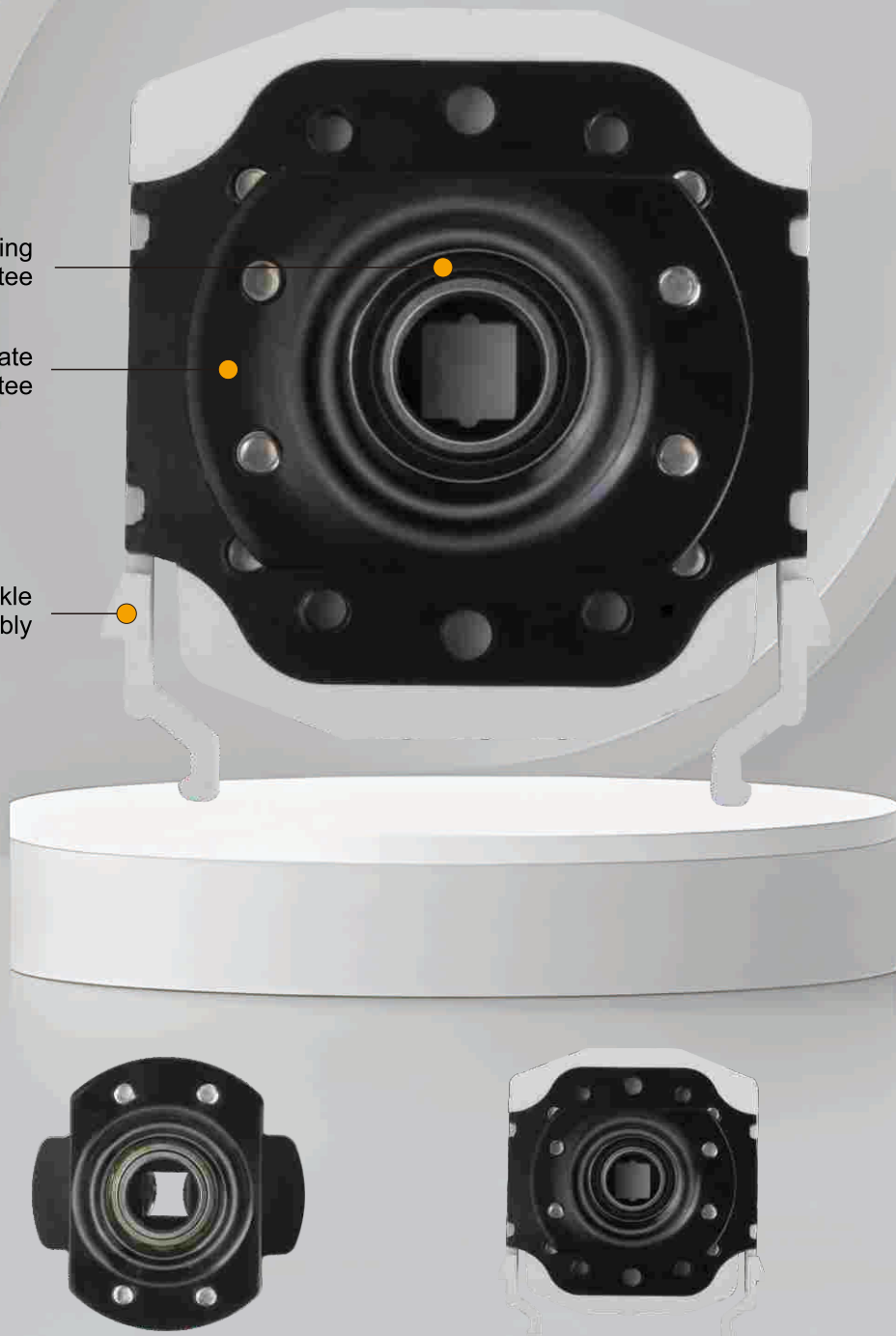
Gravity bearings, Make the system run with little resistance. More durable



Gravity bearing
Life guarantee

Extra-thick steel plate
Strength guarantee

Self-locking buckle
Easy disassembly



Core technology

11

Extra wide windproof roller blinds Motor maintenance technology

Patent number: 2023203262585

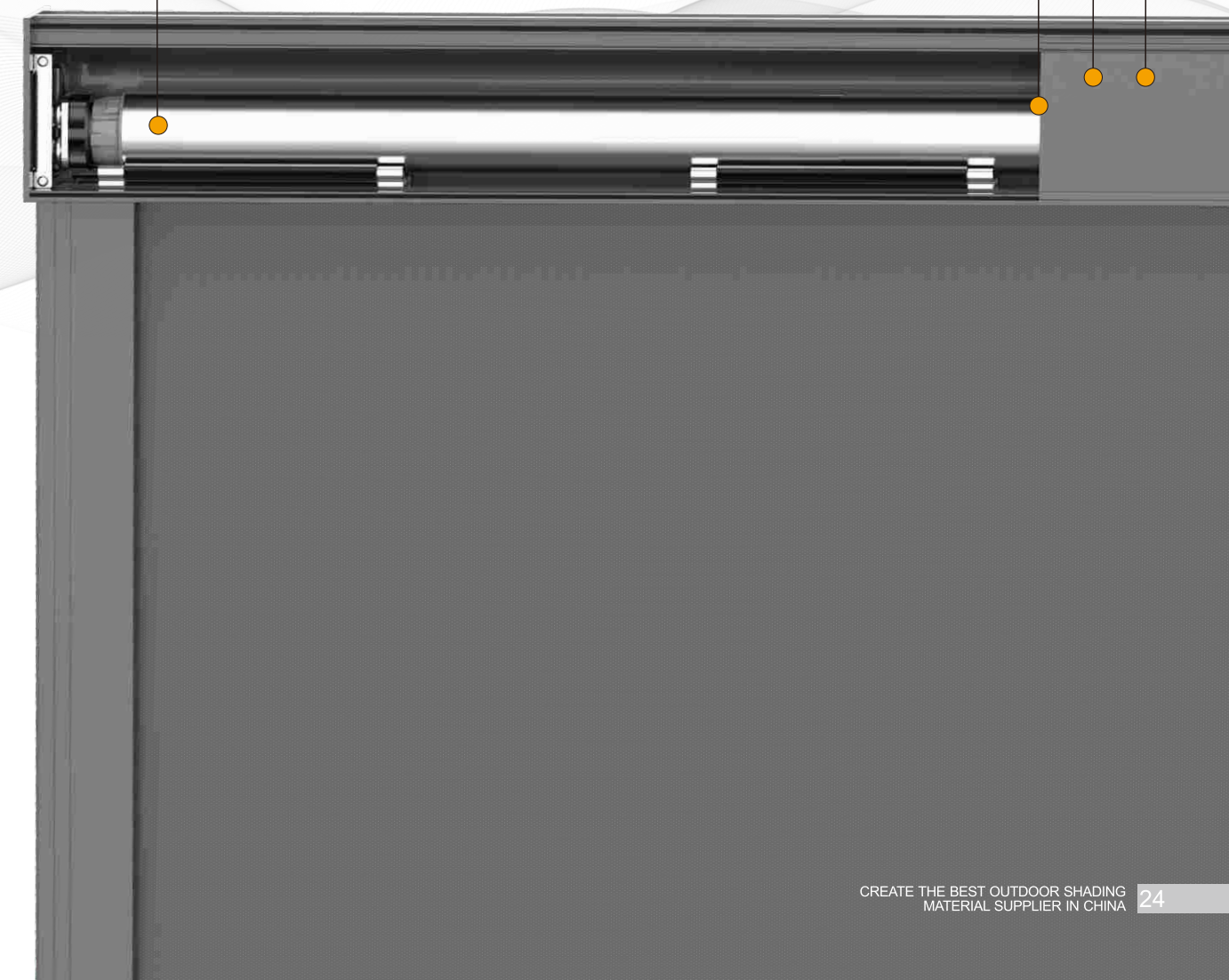


You can change the motor without removing the blinds

Easy fabric installation technology

Built-in fabric flat core technology

High strength connection



WINDPROOF ROLLER BLINDS

- 

Strong
Windowproof
- 

Sun
Shade
- 

Rainstorm
- 

Thermal
insulation
- 

Temperature
control
- 

Beautify
theenvironment

- ▶ Smart balancer, let the zipper vertically into the zipper guide rail, flat fabric, good wind performance;
- ▶ Snap side rails and three-piece side rails (finished products) are available;
- ▶ Electric, hand push, chain control hand crank four operating systems;
- ▶ Use 78 double-layer tubes, up to 6 meters wide, use 63 thick tubes, up to 5 meters high;

Outdoor special windproof roller blinds system

WR120 Windproof roller blinds series

WR-120 Motorized windproof roller blinds

Width up to 6 meters, multiple smart home connections, widely used in sunrooms,clubhouses, balconies and other high-end places



WR-120 Spring windproof roller blinds

Width up to 4 m; suitable for small to medium-sized, not very high, no power supply locations



WR-120 Chain control windproof roller blinds

Widths up to 2.5 m; suitable for small windows, high ceilings, and places without power



WR-120 Hand crank windproof roller blinds

Widths up to 4 m; suitable for small to medium-sized, high-gradient, unpowered locations



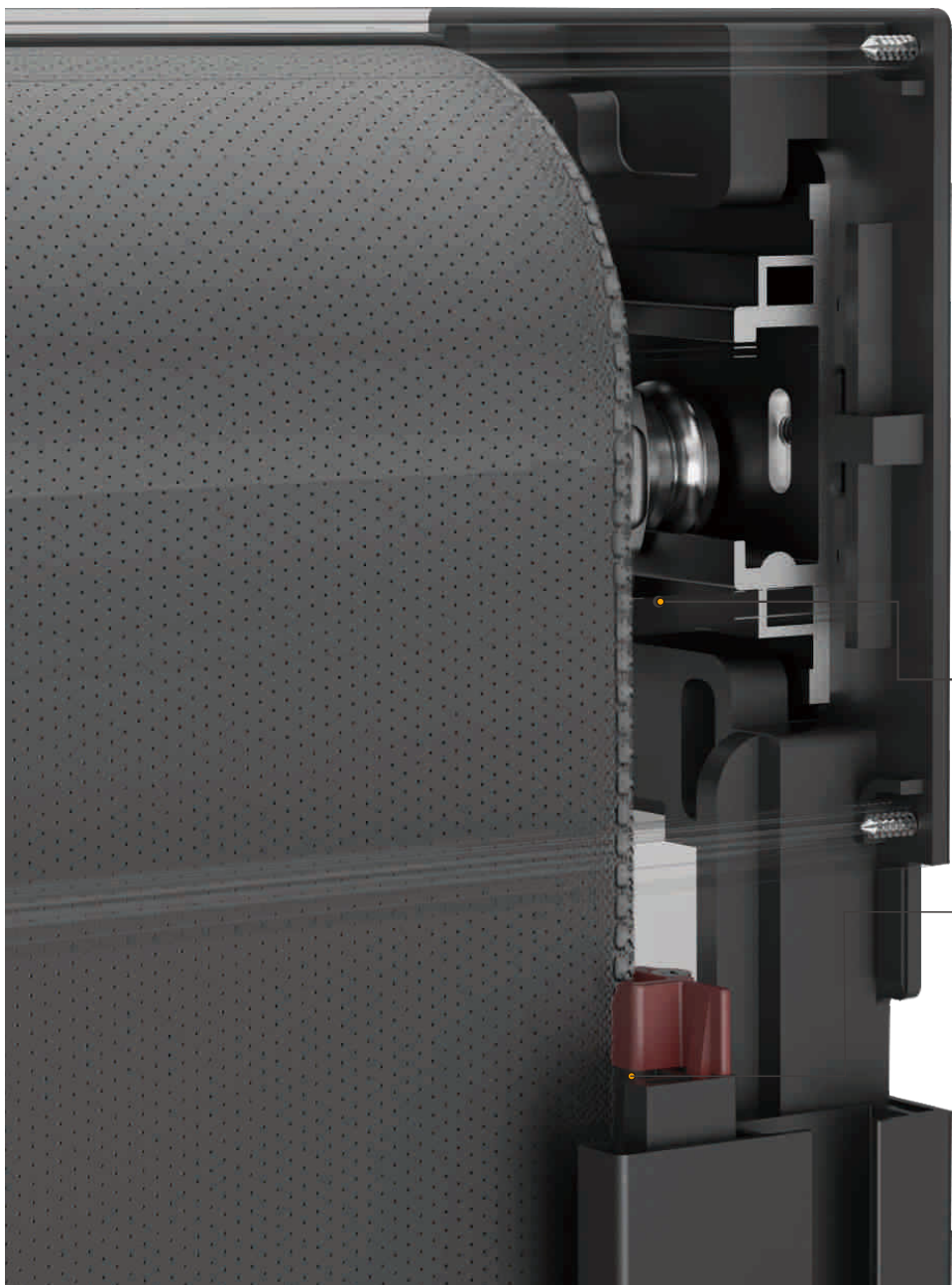
WR120 Windproof roller blinds application features

- ▶ 120x120mm Cassette system;
- ▶ Smart balancer, windproof roller blinds last longer
- ▶ External buckle side rail, excellent windproof performance;
- ▶ Double zipper guide for better strength
- ▶ Ultra-thick 78 double-layer tube, windproof curtain up to 6 meters wide, using 63 aluminum tube, height up to 6 meters;
- ▶ Pull bead, hand push, hand, electric operating system, to meet the different needs of customers



SMART BALANCER

SMART BALANCER MAKES WINDPROOFROLLER BLINDS MORE DURABLE



FLATTER FABRIC

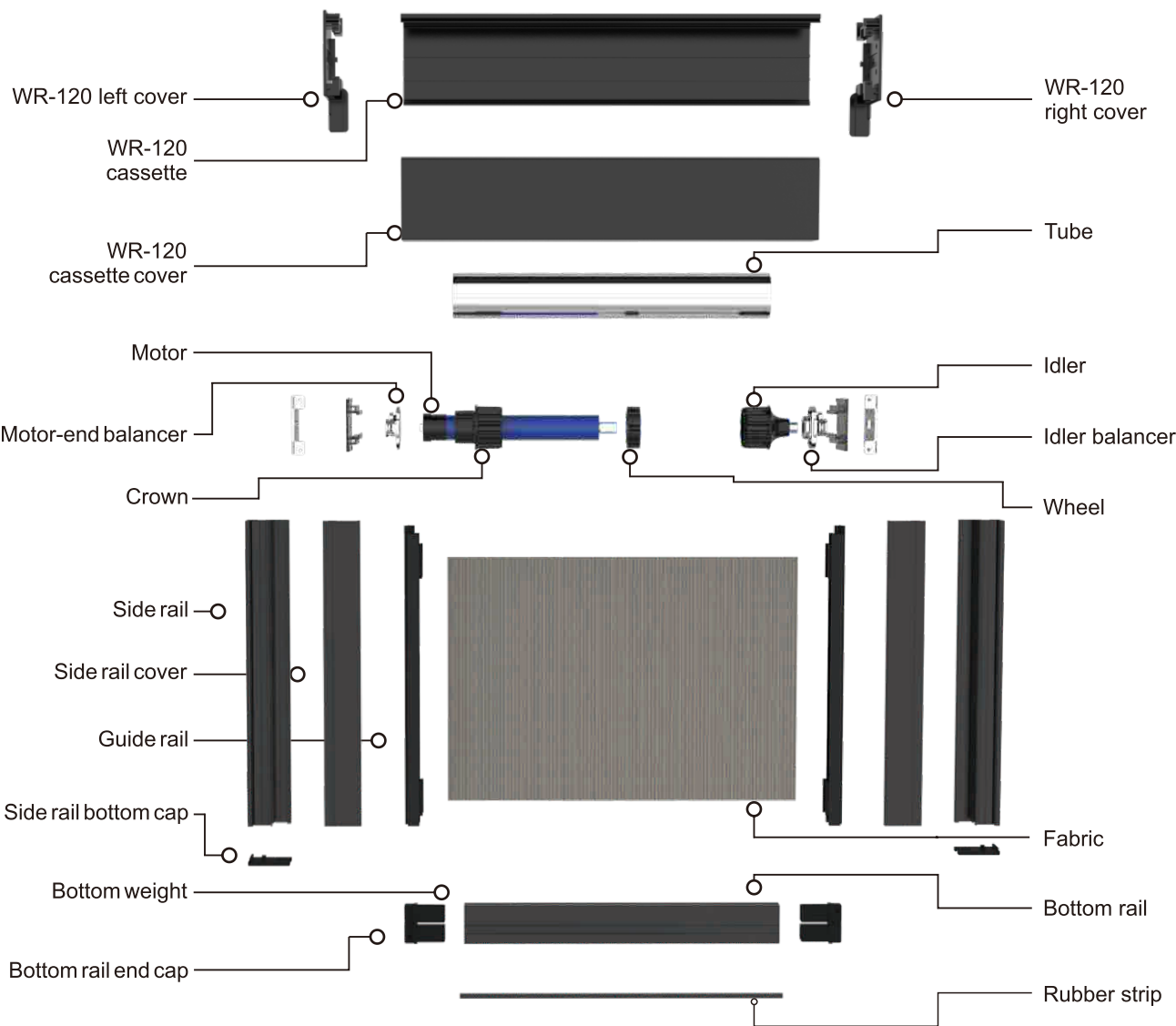
Smart balancer: Ensures that the face material is released orwound from the roll tube at an angle parallel to the zipper guide,making the face material run flatter and straighter.



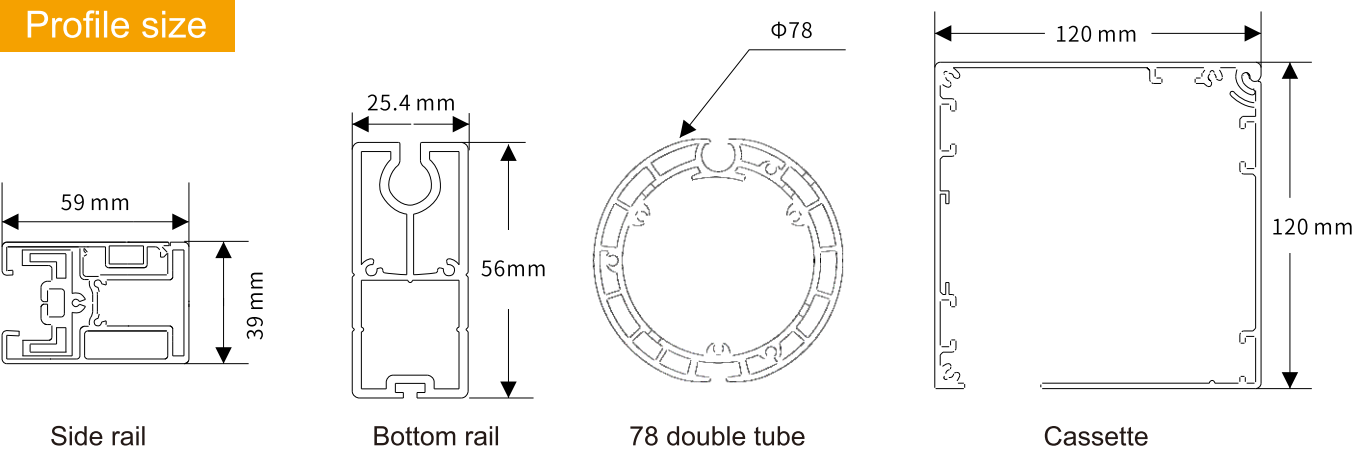
FULL CARE OF ZIPPERS

Smart Balancer: Automatically adjusts the position of the centerof the coil according to the amount of material, ensuring that thezipper always enters the zipper guide in a vertical position, takingcare of the zipper throughout the process and ensuring that thesystem is used for a longer period of time.

WR-120 Windproof roller blind diagram



Profile size



WR-120 The specification recommendation of windproof roller blinds

The specification recommendation of windproof roller blinds

Height	With 63 tubes, the maximum height can exceed 5 meters, but the width should not be too wide, otherwise the tube will be bent; with 78 tubes, it is recommended that the single-layer tube be less than 5 meters in width and less than 3.5 meters in height; with 78 double-layer tubes, the width can be up to 6 meters and less than 3 meters in height							Various drive systems can be made
Width	Width<3m			width			Remarks	
Category	DriveSystem	Aluminum tube	Bottomrail	DriveSystem	Aluminum tube	Bottomrail		
Motorized	35 tubular motor AM35-10/17,10NM	63mm tube	Heavyweight bottom rail	35 tubular motor 10NM	78mm tube	Heavyweight bottom rail		0.700M
	45 tubular motor 20NM	63mm tube	Heavyweight bottom rail	45 tubular motor 20NM	78mm tubes (single-layer tube:up to 5 meters;double-layer tube up to 6 meters).	Heavyweight bottom rail	When using 90 tubes, it is recommended to use 150 shields; AOKAM45-20/17 motor can be equipped with 15NM, 30NM, and 20NM as standard.	0.700M
Hand push	Tl001 Spring locking torsion spring head	63mm tube	Easy to pull	Tl001 Spring locking torsion spring head	63mm tube	Easy to pull		0.92M
Chain control	WR-120 63 CLUTCH	63mm tube						0.4M
Hand operated	Turbo transmission with fixed plate B09-C	63mm tube	Heavyweight bottom rail	Turbo transmission with fixed plate B09-C	63mm tube	Heavyweight bottom rail	The recommended width is less than 4m	0.35M

