

C28-WR100B Windproof roller blinds

Suitable for 63 tube can be selected,
The width can reach 4 meters
The height is less than 3.8 meters,
Widely used in engineering projects

C28-WR100B Motorized windproof roller blind system

Suitable for indoor and outdoor, 63 thick tube can be
selected, The width can reach 4 meters The height is less
than 3.8 meters, Widely used in engineering projects

C28-WR100B Spring windproof roller blind system

Suitable for indoor and outdoor, 63 thick tube can be
selected, The width can reach 4 meters The height is less
than 3.8 meters, Widely used in engineering projects

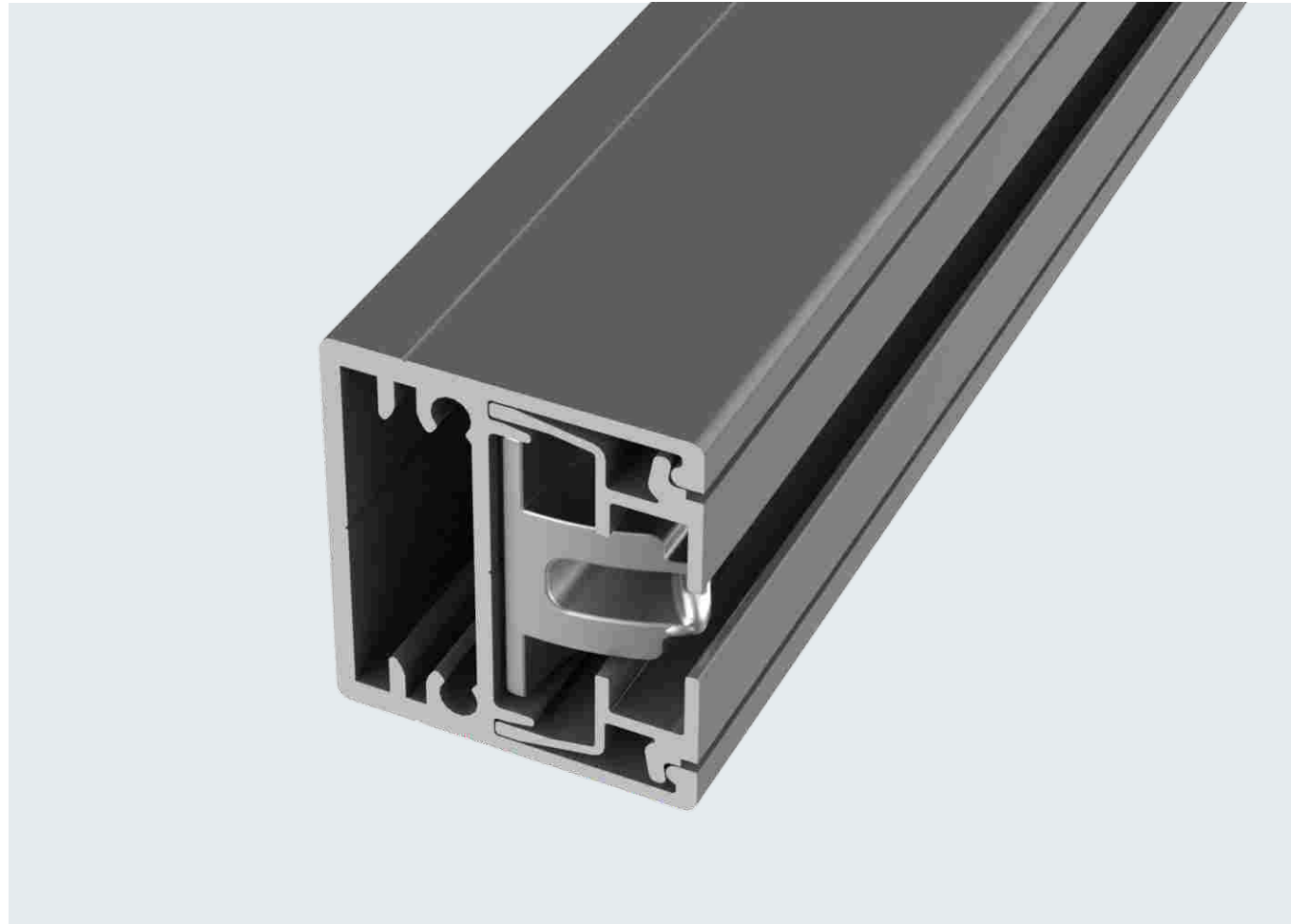


Construction Features

1. Small Steel cannon, simple but delicate;
2. The combination of front and rear seams of the cover provides an overall aesthetic appearance;
3. The fabric is guided by double nano strips to ensure that the zipper enters the zipper guide rail vertically and is smooth as a whole;
4. The bottom rail is made of high-strength aluminum alloy, with hidden material welding joints and hidden screw design;
5. The best choice for indoor windproof blinds, with a width of up to 4 meters and a height of up to 3.8 meters;
6. The ultra large side groove has complete functions and can be installed on walls or frames. The cutting length of 27 * 30mm is more suitable for the installation or assembly of some aluminum columns;

C28-WR100B WINDPROOF ROLLER BLINDS

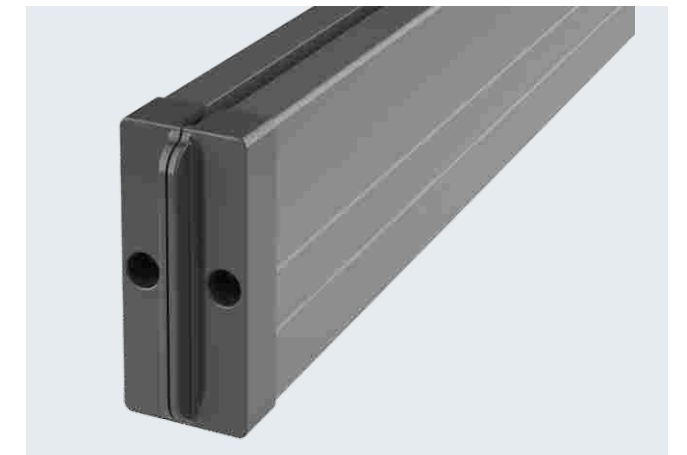
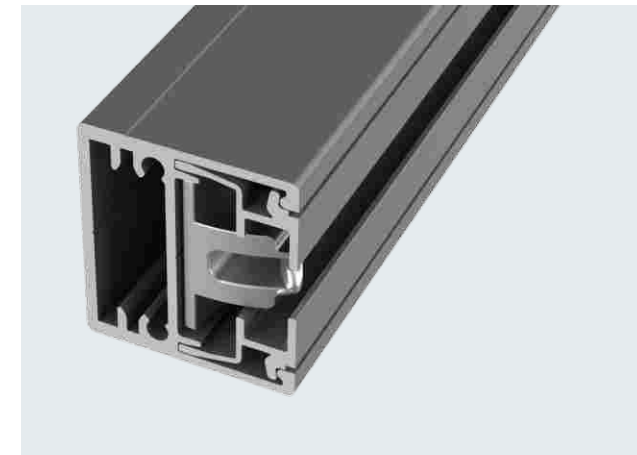
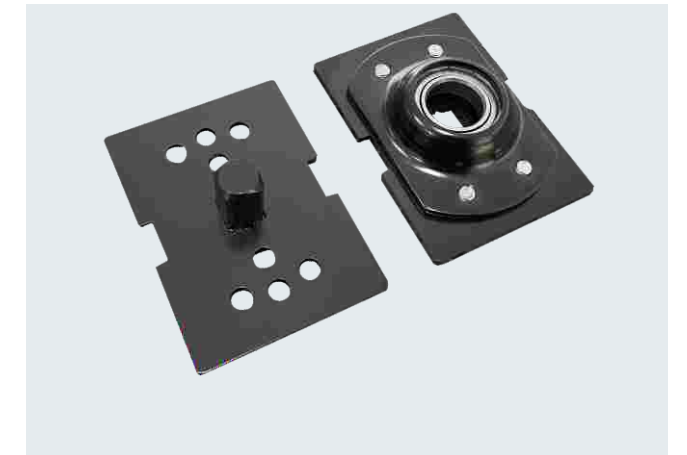
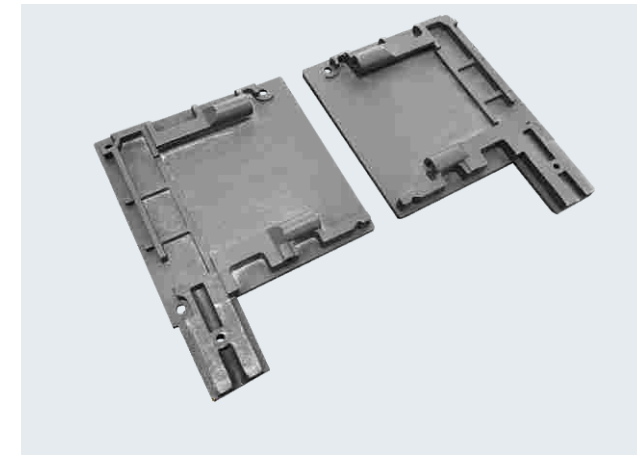
Windproof roller blind for glass wall



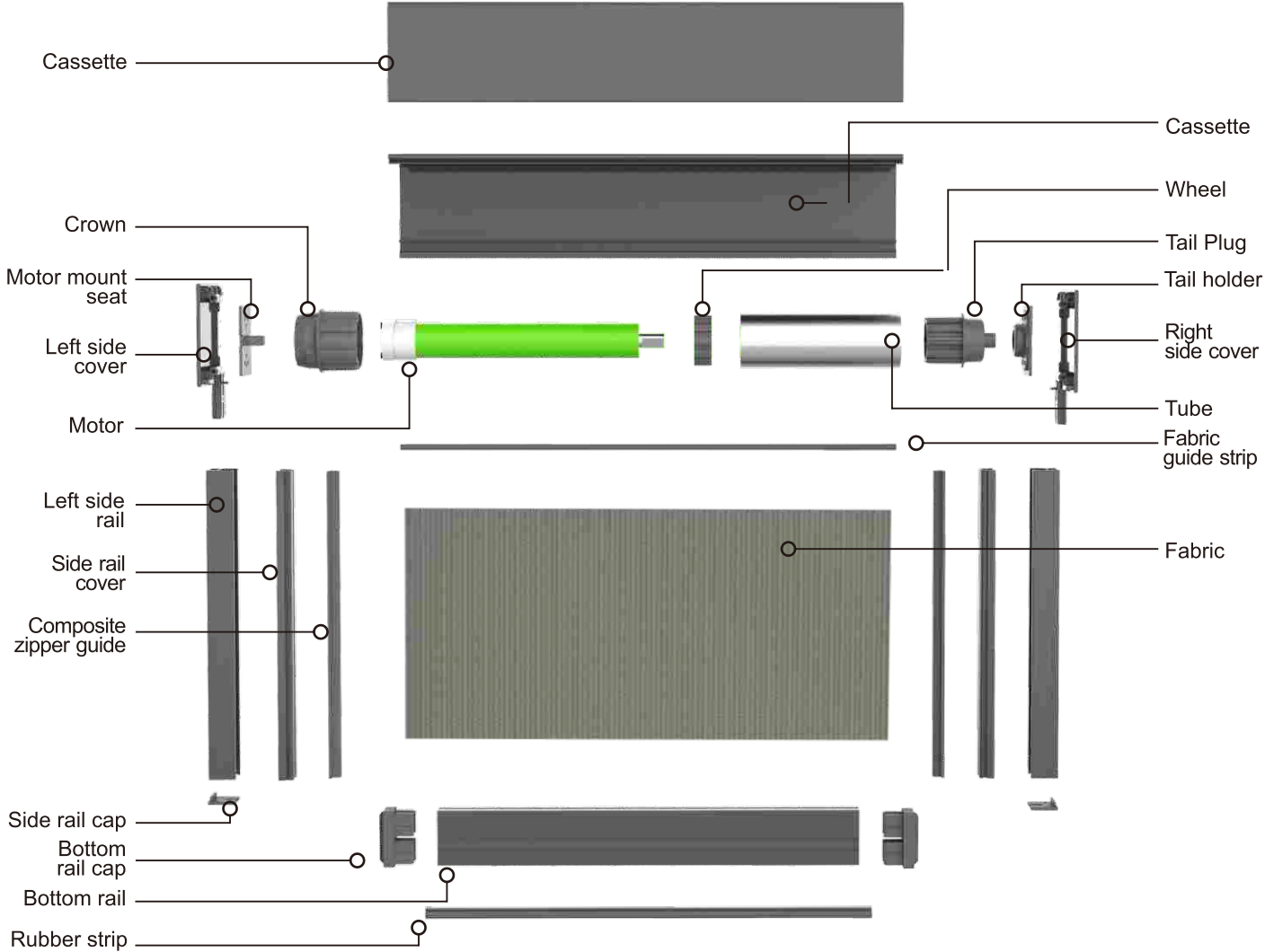
Construction Features

1. 100*100mm cassette system; Small and delicate;
2. High quality steel plate end cover, the whole steel plate installation base, easy to install;
3. 27*30mm mini small side rail, small and delicate, especially suitable for office use;
4. Small zipper guide rail, compact structure;
5. The selection of superthick 63 aluminum tube, windproof curtain up to 2 meters wide, height less than 3 meters;
6. Optional overweight bottom rail, double counterweight, lifting more smoothly;
7. Electric operating system, special use for indoor;

C28-WR100B Engineering windproof roller blind system



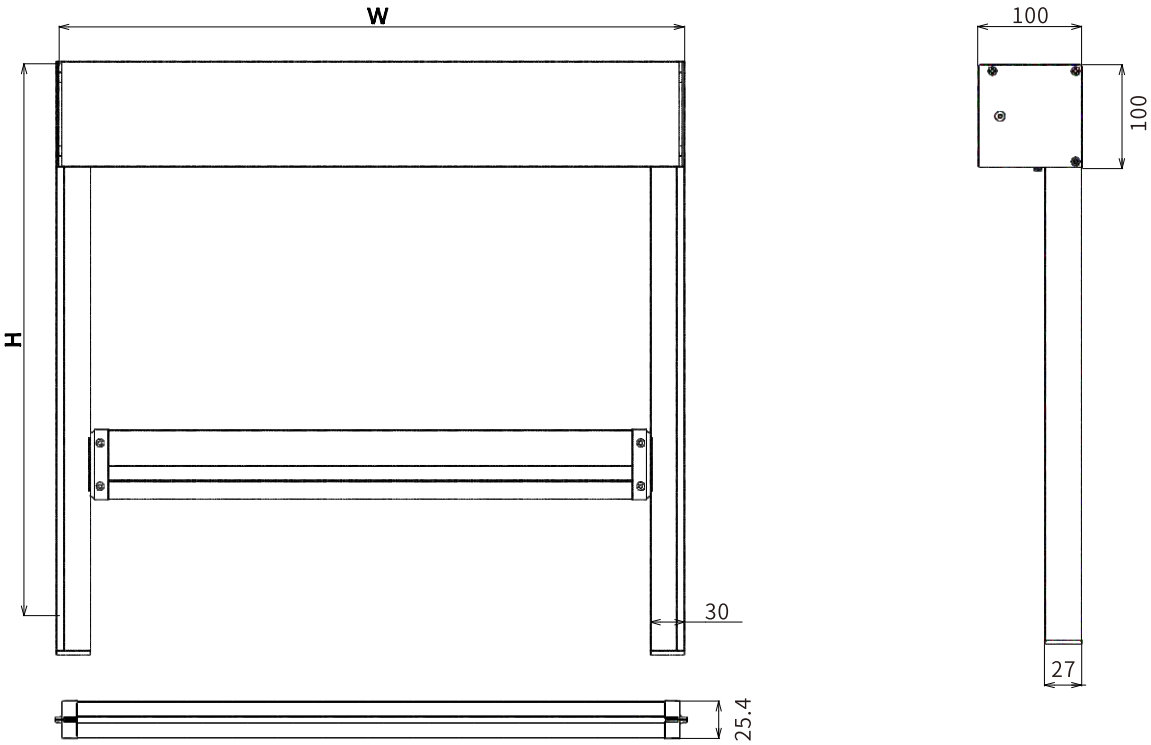
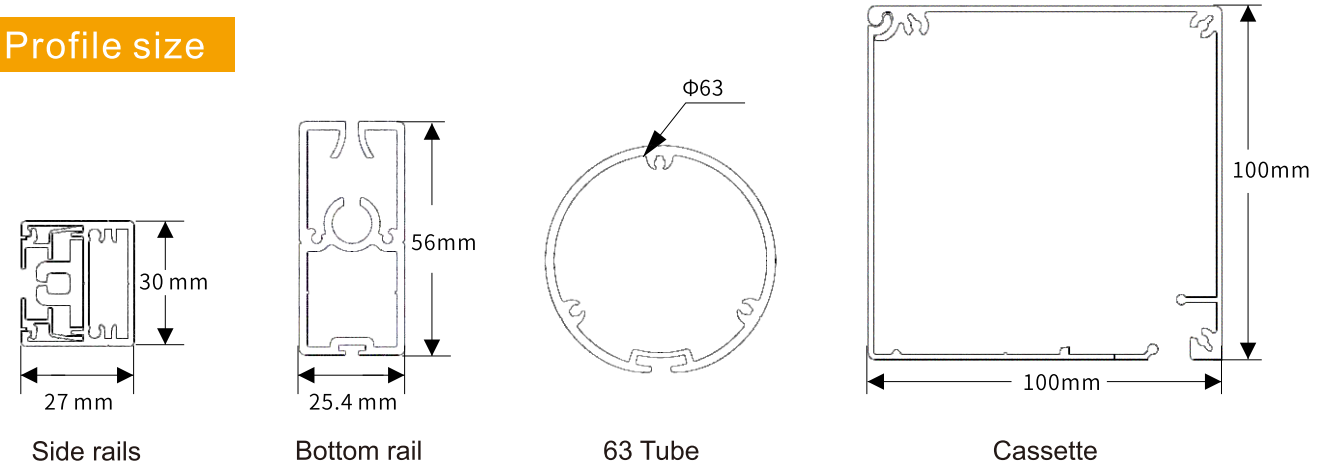
C28-WR100B Windproof roller blind explosive view



C28-WR100B Windproof shutter specifications recommended table

C28-WR100B Windproof shutter specifications recommended table											
Width	Width<3m				3m<Width<4m				Remark	Various drive systems can make minimum width	
Category	DriveSystem	Aluminum Profile	bottom Rail	Maximum height	DriveSystem	Aluminum profile	Bottom rail				
Moto-rized	AM35-10/17. 10NM38Tubular	55tube	C31 Heavy Duty Bottom Rail	4.8m	45 tubular motor 20NM~30NM	63Tube	C31C3 heavy duty bottom rail	3.8m	Width less than 3meters, can Choose 70 iron pipe	35motor:0.76M	
		63tube		3.8m							
	20NM~30NM 45 tubular	63tube		3.8m		78Double-layer Tube		3.0m			45motor:0.8M
		78tube		3.0m							
Hand push	T1001 Spring System	63tube		2.5m	T1001 Spring system	63Tube		2.5m		1.2M	

Profile size

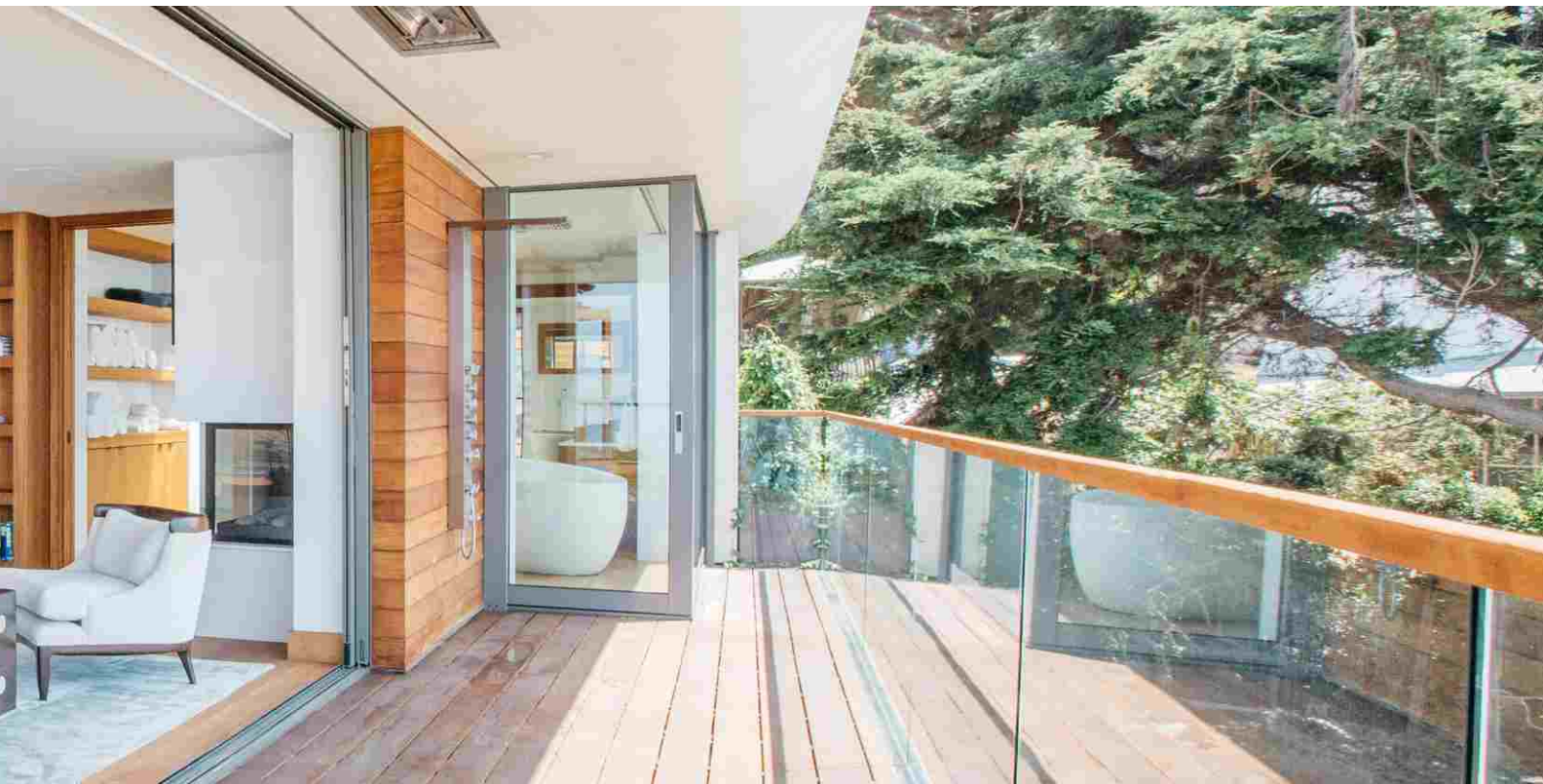


WR150-220 DOUBLE WINDPROOF ROLLER BLINDS

- Fastener self-locking installation fixed seat;
- Button-type side rail three-piece side rail;
- Electric operating system;
- Use 63 Tube, width less than 3.8 meters, height up to 4 meters;

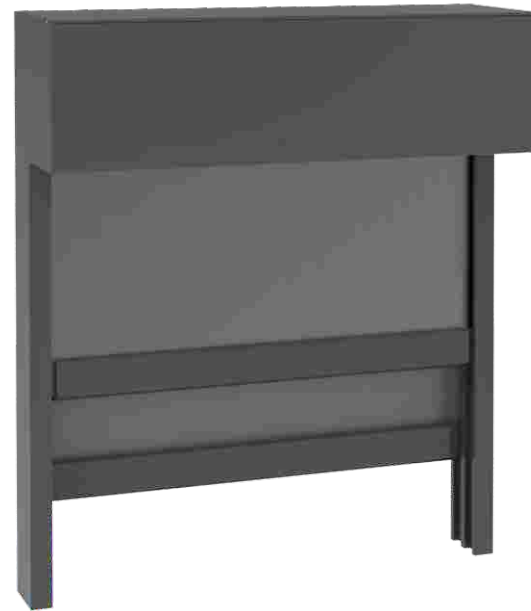


WR150-220 Double windproof roller blinds system



WR150-220 Double windproof roller blinds system

There are electric and spring system available, matching 55/63/78 etc. tube, height up to 6 meters; Widely used in engineering projects. Up to 6 meters; widely used in engineering projects.



WR150-220 Double windproof roller blinds system (without cassette)

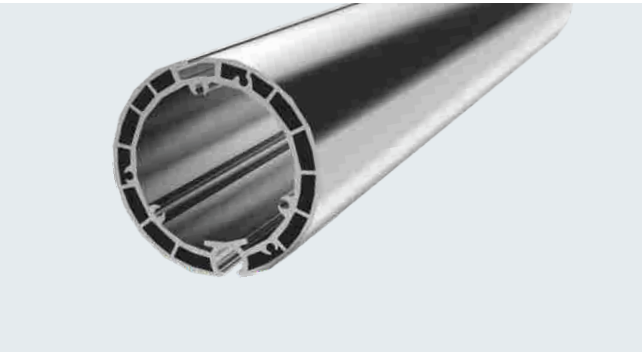
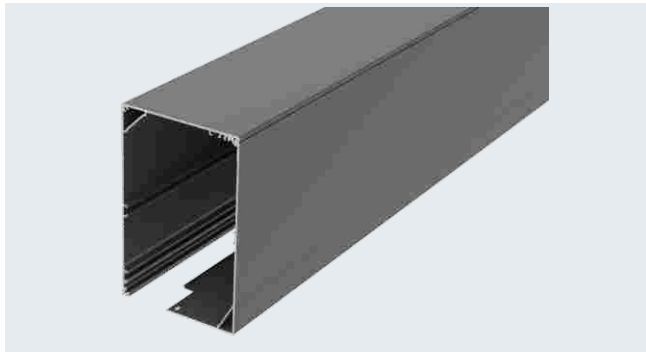
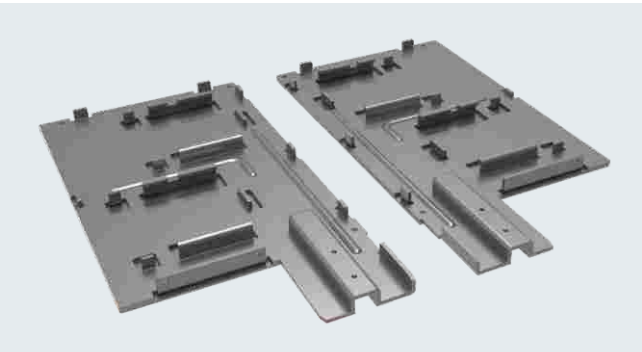
There are electric and spring system available, matching 55/63/78 etc. tube, height up to 6 meters; Widely used in engineering projects.



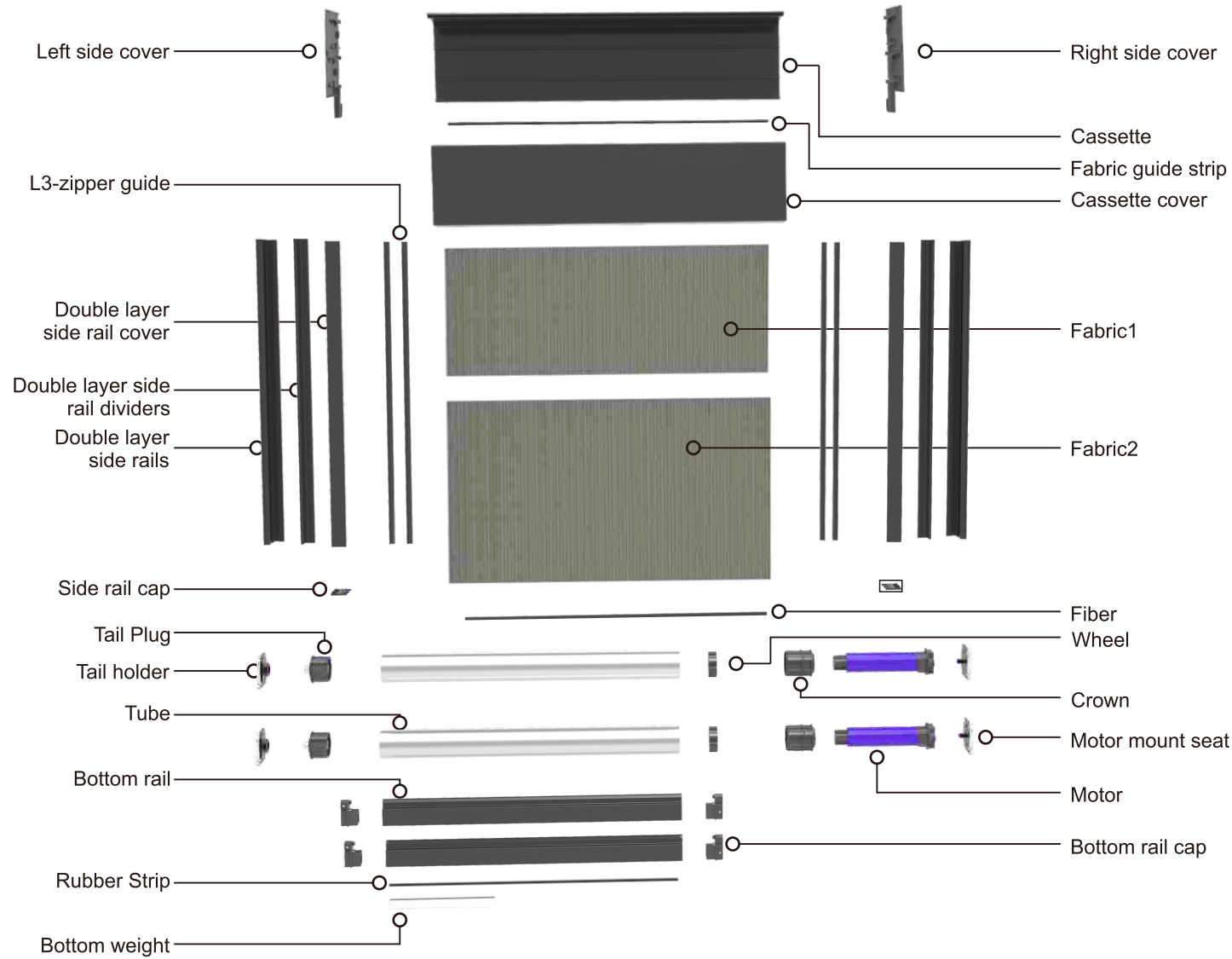
WR150-220 Double windproof roller blinds system

NEWHOO® | WINDPROOF CURTAIN SYSTEM

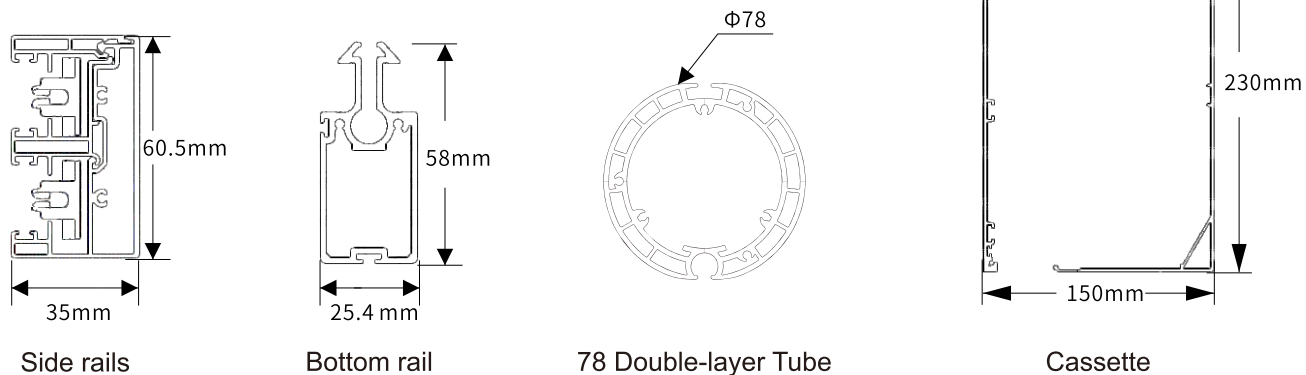
- ▶ Cassette size 150X230mm, generally do not use cassette, indoor pre-installed curtain box places;
- ▶ Side buckle type double rail side rail;
- ▶ Small zipper guide, compact structure;
- ▶ High quality steel plate end cover;
- ▶ Selection of 78 double-layer tube, the width can exceed 5 meters;
- ▶ Electric operation, for high-end engineering projects;



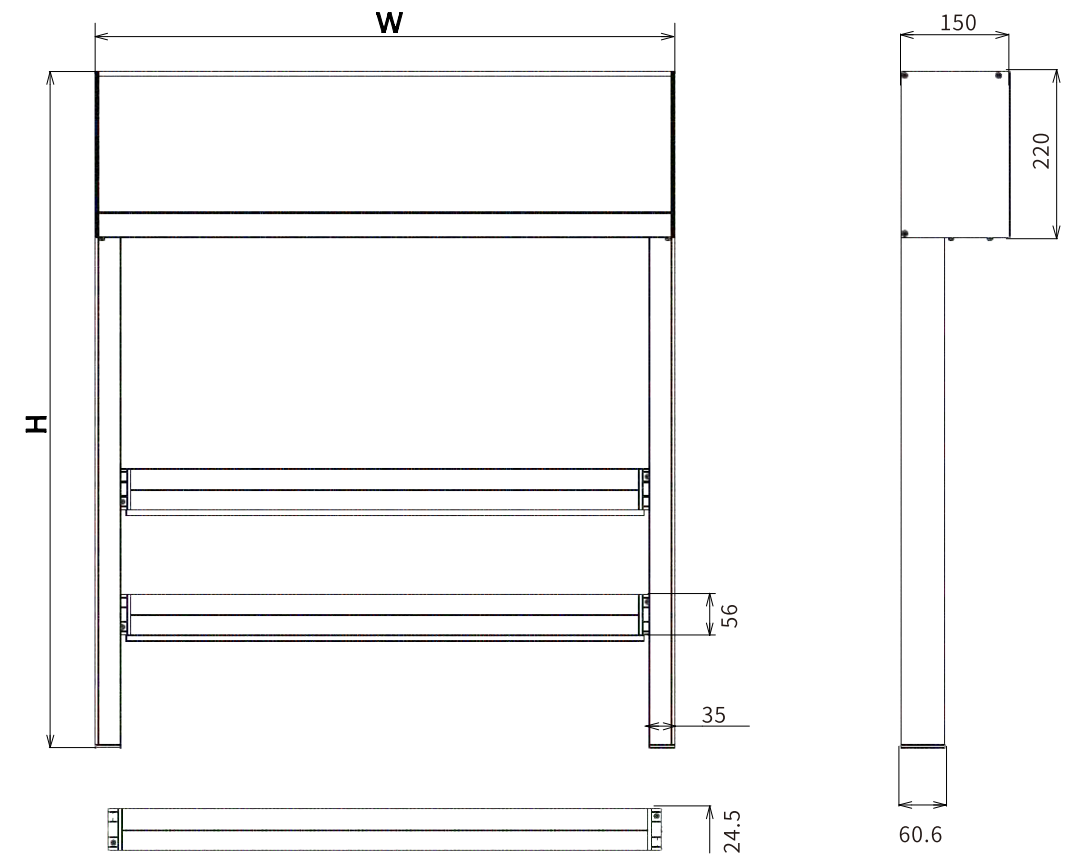
WR150-220 Double windproof roller blinds explosive view



Profile size



WR150-220 Double windproof roller blinds system measurement chart

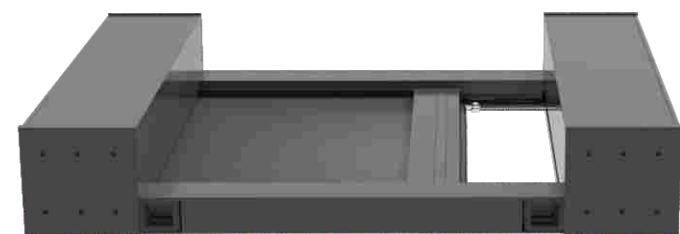
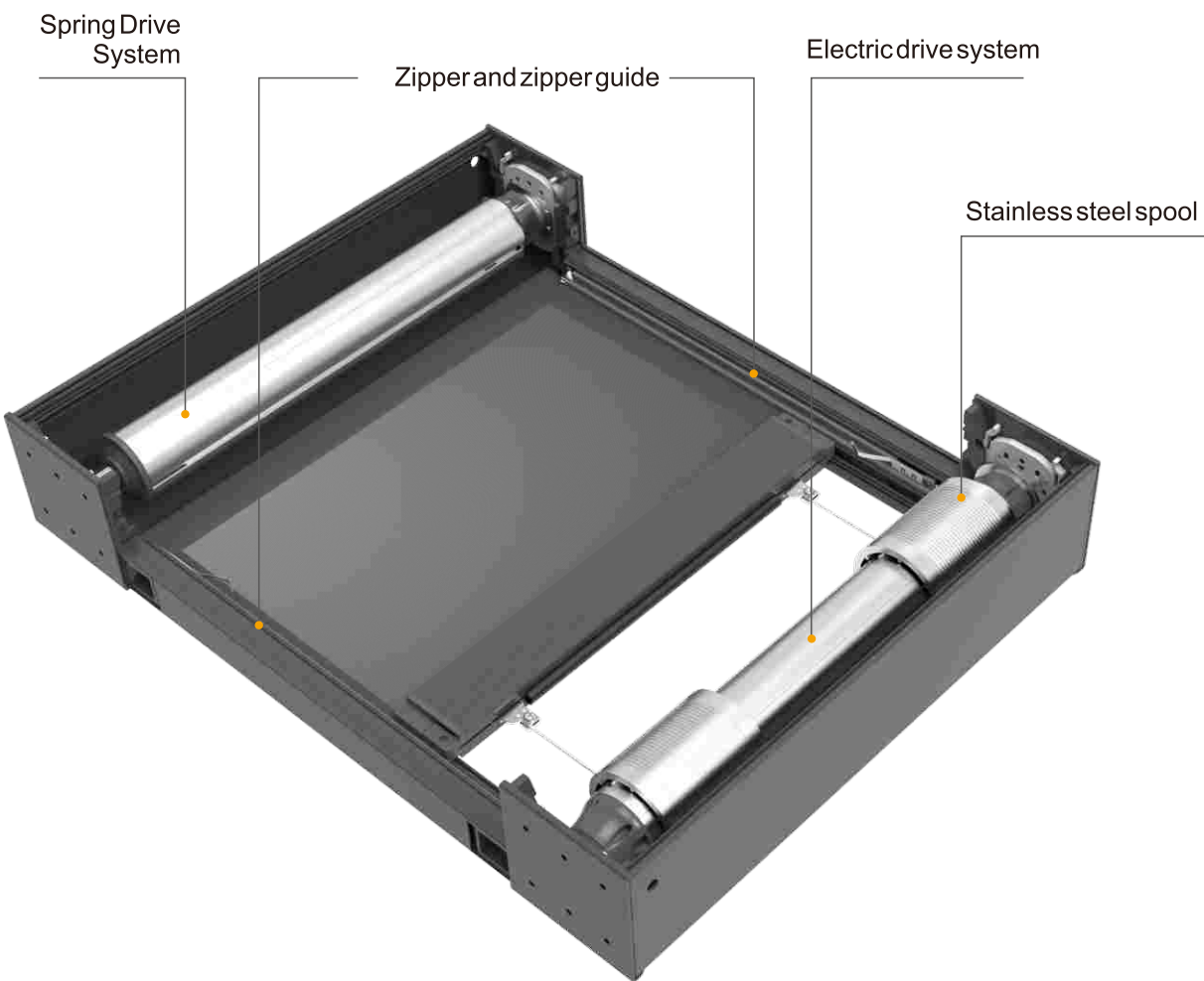
[illegible]

TW001 AWNING
SYSTEM

- Windproof
- Sun shade
- Rainstorm
- Thermal Insulation
- Temperature Control
- Beautify the insulation Control environment

TW001 Awning system

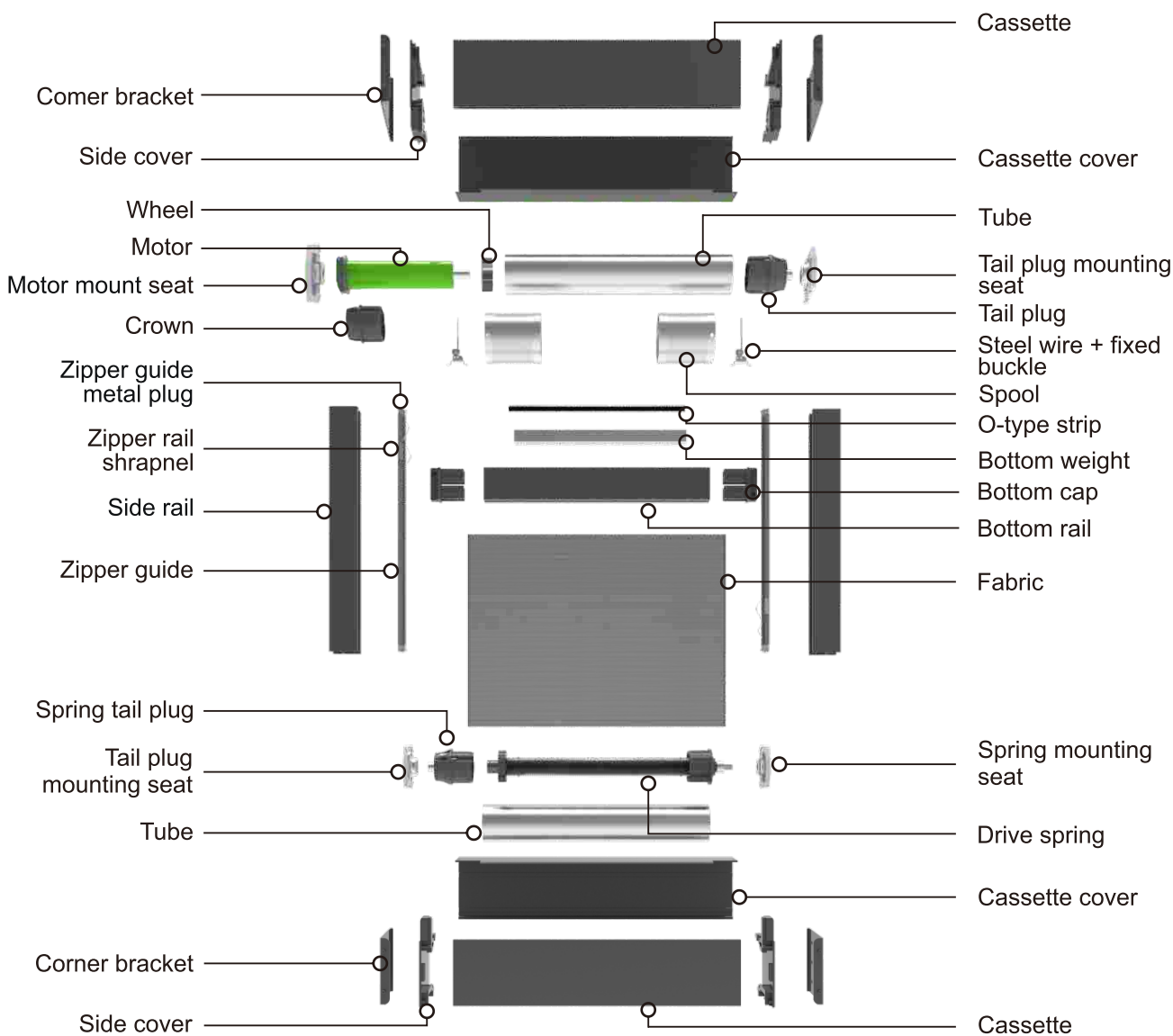
- ▶ WR120B windproof curtain system, electric and spring system combination;
- ▶ National standard 304 stainless steel wire rope traction, aluminum alloy thread coil take-up;
- ▶ Generally use super thick 63 tubes;
- ▶ It is recommended that the width is less than 3 meters, the length is less than 4 meters, and when the width is wider, the middle should be installed with a pallet rail;



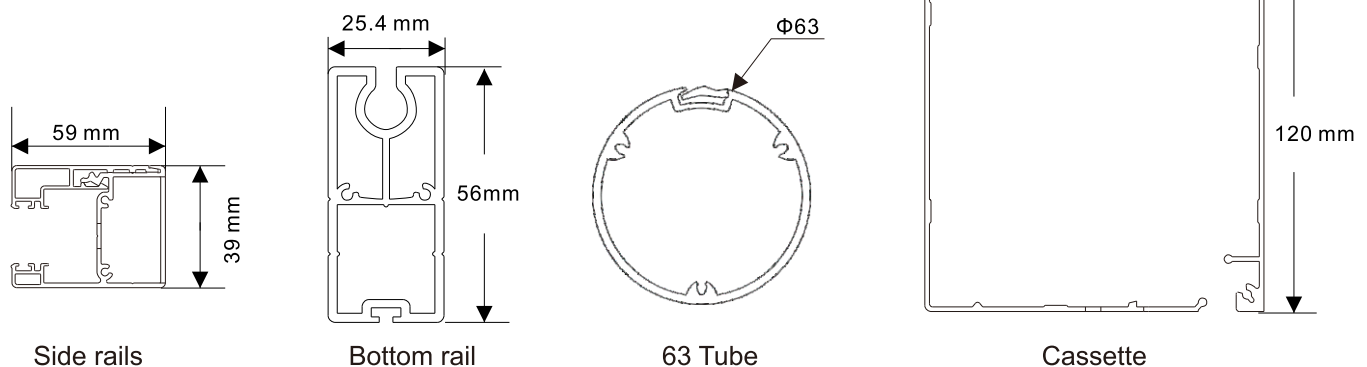
- ▶ Use the combination of motorized windproof roller system and spring windproof roller system to expand the windproof roller blind in to a canopy system;
- ▶ The system can be flush mounted and can be mounted at a large angle diagonally;
- ▶ The system adopts 304 stainless steel wire and engineering plastic made of high strength reel used in the ceiling system, long life, shading, shading effect is excellent;
- ▶ Note: It is best to install under the glass to prevent water from accumulating on rainy days;

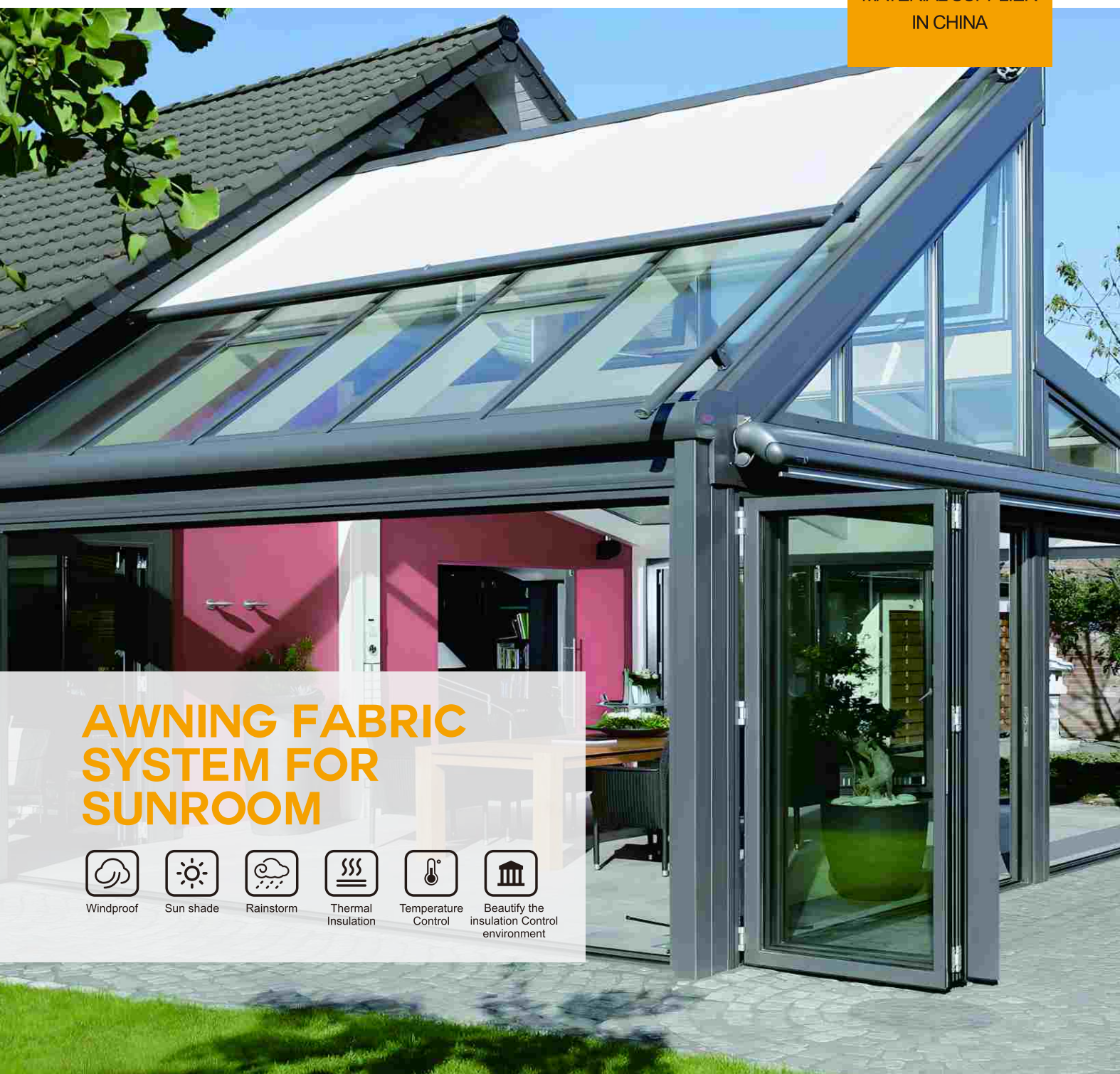
TW001 Awning system explosive view

NEWHOOD WINDPROOF CURTAIN SYSTEM



Profile size





AWNING FABRIC SYSTEM FOR SUNROOM



Windproof



Sun shade



Rainstorm



Thermal
Insulation



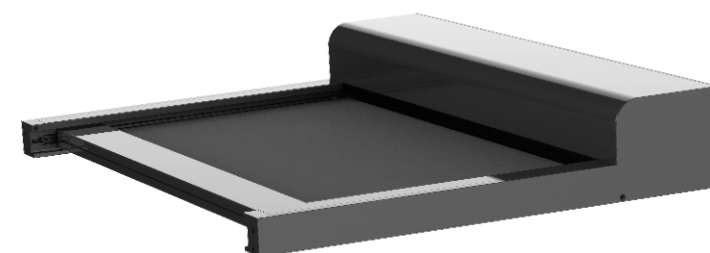
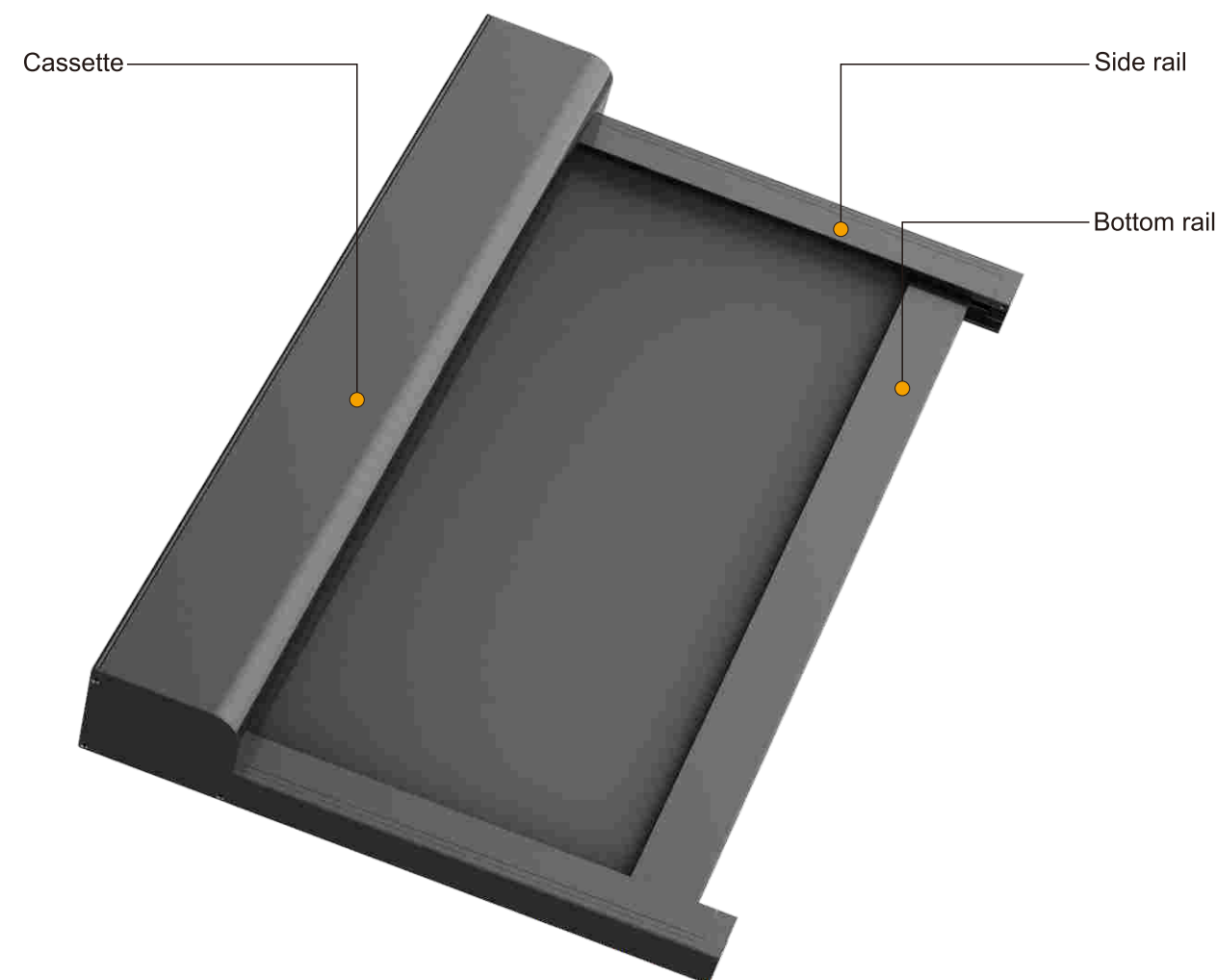
Temperature
Control



Beautify the
insulation Control
environment

Awning fabric system for sunroom

- ▶ Elastic band traction technology;
- ▶ Snap type side rail;
- ▶ Electric operating system;
- ▶ Use 63 tube, width not exceed 4 meters length does not exceed 5 meters;



- ▶ Use the combination of motorized windproof roller system and spring windproof roller system to expand the windproof roller blind in to a Canopy system;
- ▶ The system can be flush mounted and can be mounted at an angle diagonally;
- ▶ The system adopts 304 stainless steel wire and engineering plastic made of high strength reel used in the ceiling system, long life, shading, shading effect is excellent;
- ▶ Note: It is best to install under the glass to prevent water from accumulating on rainy days;



① Choose professional grade outdoor windproof roller blind special fabric

- ▶ More than 2000N/5CM tensile strength, can resist wind and gravity impact of the sun screen;
- ▶ Tear strength greater than 100N;
- ▶ More than 8 grade color fastness, acid and alkali resistance, can be used for more than 10 years in harsh outdoor environment;
- ▶ The thickness is 0.5~0.8mm;
- ▶ Good welding performance, smooth weld, welding tear greater than 500N, pulling force greater than 1000N/M;
- ▶ Shrinkage less than 2%;
- ▶ Opening rate is optional;
- ▶ Special definition of specific fabric properties;

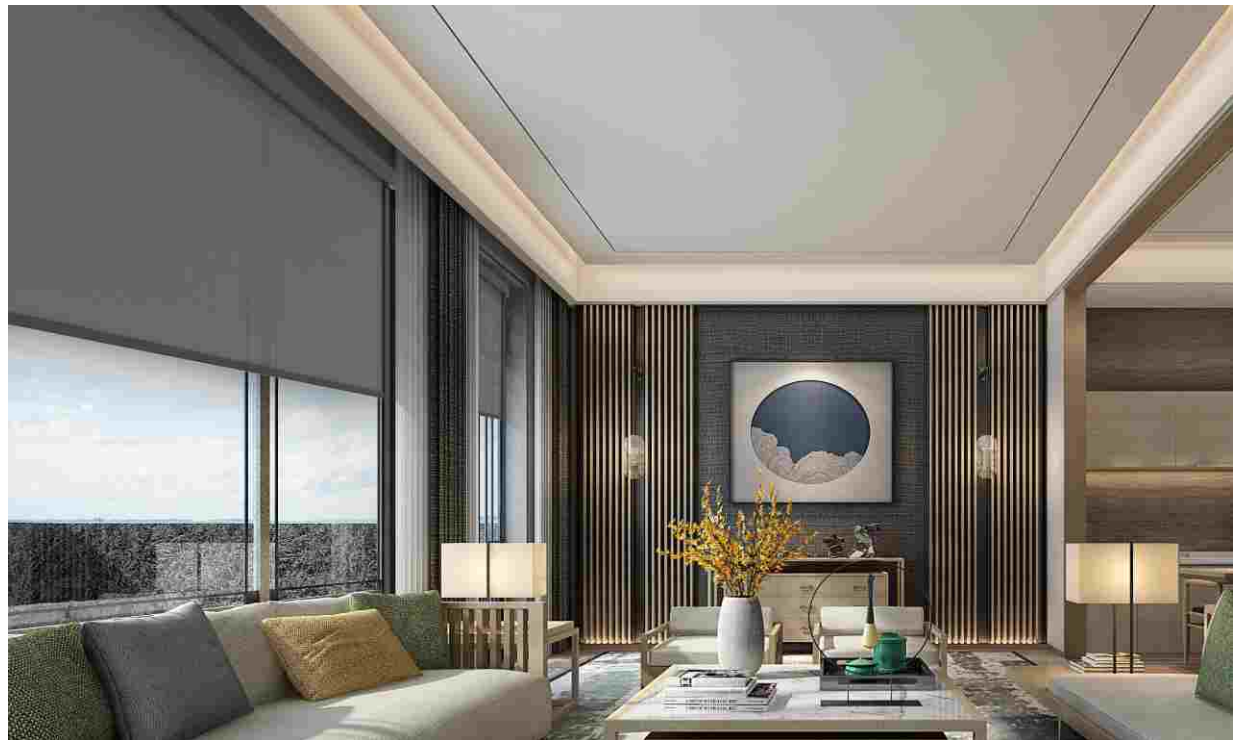
② Based on the basic environmental requirements of outdoor windproof roller blinds

- ▶ Width more than 4 meters; Can meet the needs of different buildings;
- ▶ The material selection is reasonable, and it can work normally for a long life under harsh conditions such as strong acid, strong alkali, cold and hot summer, strong wind and showers.
- ▶ Use outdoor special zipper;
- ▶ Reasonable structure, fine details, durable system;
- ▶ Smooth, stable and durable;
- ▶ A variety of operating modes to meet the requirements of different environments;



WINDPROOF
ROLLER BLINDS
FABRIC

- Windproof
- Sun shade
- Rainstorm
- Thermal Insulation
- Temperature Control
- Fireproof



Parameters

Composition		76%PVC+24%Polyester
Width		3m
Weight		630g/m ² ± 5%
Thickness		0.7MM±5%
Color Fastness		ISO 105 B02 8 AATCC 16 4
Tensile strength	Warp	≥2250N/5cm
	Weft	≥1830N/5cm
Breaking Strength	Warp	≥ 130 N
	Weft	≥ 100 N
FR Standard		FR- NFPA 701 B1- GB17591 BS- 5867 Part2 TypeB B1- DIN4102
Fabric Description		Blackout Fabric
Openness Factor		0%

Openness Factor
Blackout Fabric

0%



▶ NP23004060SP
Black & Brown



▶ NP23005050SP
Grey



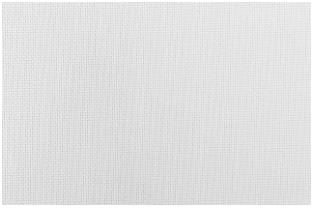
▶ NP23004040SP
Black



▶ NP23001010SP
White

Openness Factor
Blackout Fabric

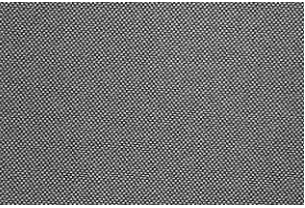
1%



▶ NP32011010SP
White



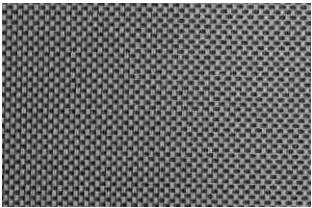
▶ NP32015050SP
Grey



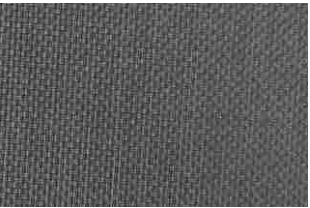
▶ NP32014050SP
Black & Grey

Openness Factor
Blackout Fabric

3%



▶ NP2034050CP
Black & Grey



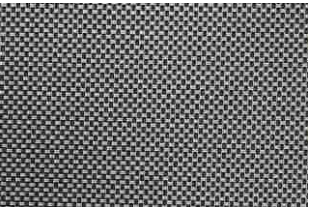
▶ NP21035151CP
Dark & Grey

Openness Factor
Blackout Fabric

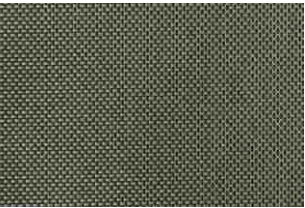
5%



▶ NP33051070CP
White & Beige



▶ NP33054050CP
Black & Grey



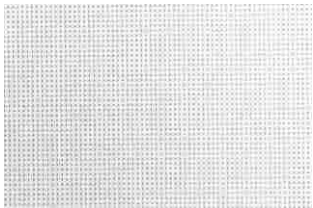
▶ NP33054060CP
Black & Brown

Windproof roller blinds fabric

Openness Factor
Blackout Fabric 5%



▶ NP33054040CP
Black



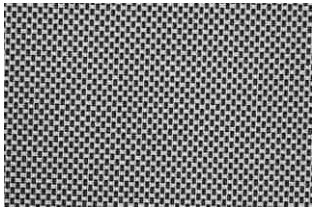
▶ NP42051010CP
White



▶ NP42054040CP
Black



▶ NP42051030CP
White & Linen



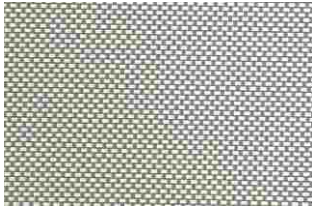
▶ NP42054050CP
Black & Grey



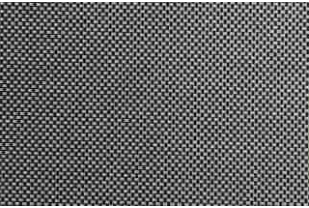
▶ NP43051010SP
White



▶ NP42056060SP
Brown

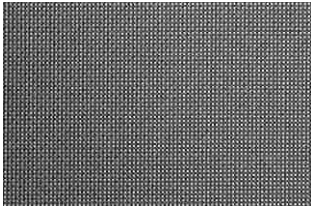


▶ NP42051050CP
White & Grey

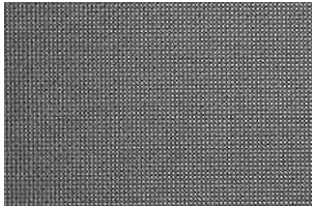


▶ NP43054050SP
Black & Grey

Openness Factor
Blackout Fabric 10%

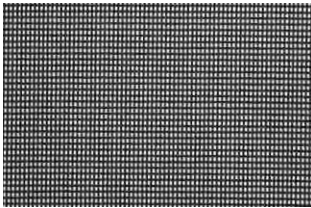


▶ NP42104050CP
Black & Grey



▶ NP42105050CP
Dark Grey

Openness Factor
Blackout Fabric 30%



▶ NP30304040CP
Black

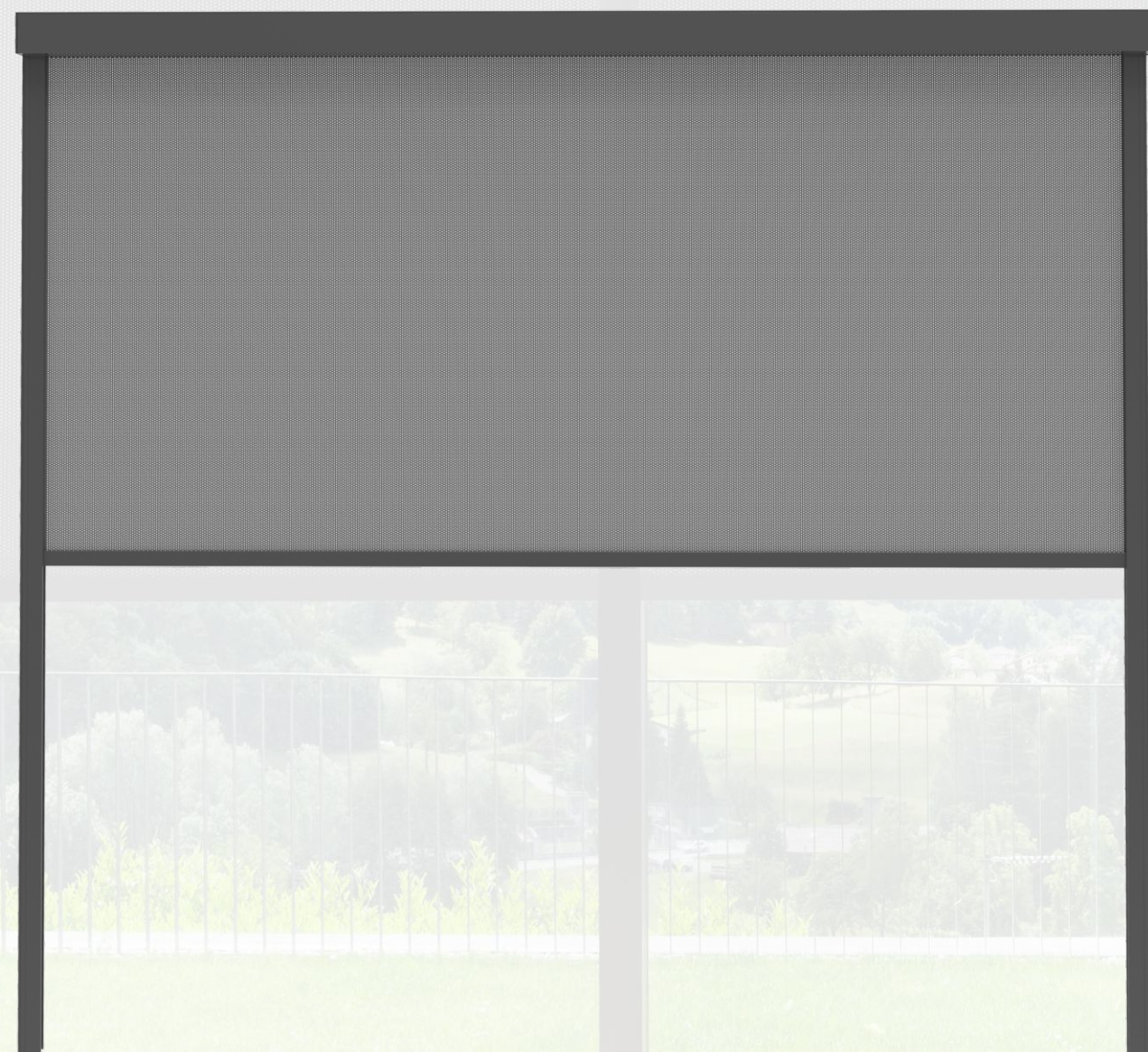
NEWHOO®

MEASUREMENT
AND INSTALLATION



Measurement and installation

Measurement precautions



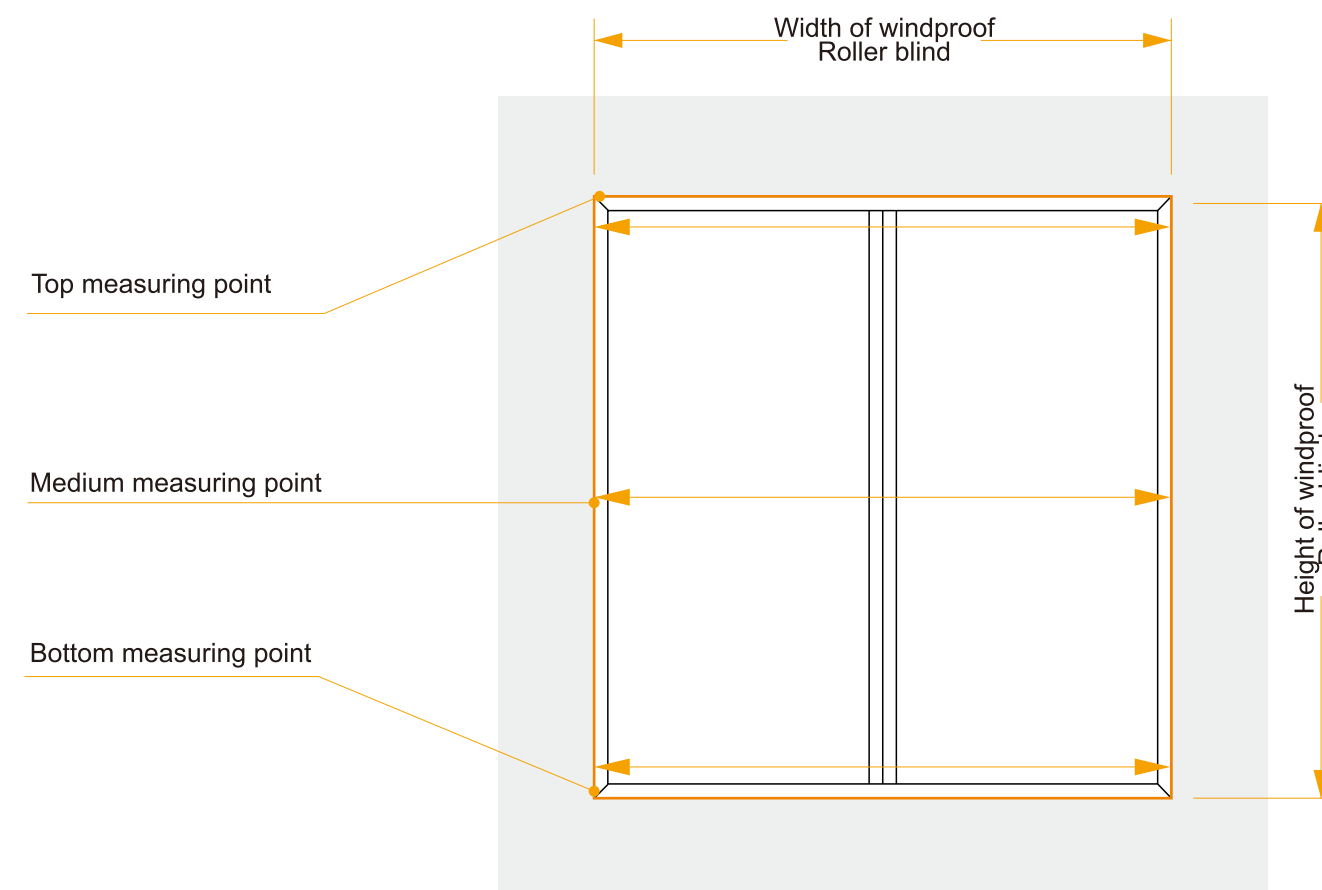
1. Whether the mounting surface is uneven or inclined;
2. Whether the installation position is firm;
3. Check whether there are obstacles in the installation position.
4. Confirm the front installation or side installation;
5. Confirm the size of the installation cassette, the height and width of the finished product (confirm the position of the power supply for electric power);

Measurement and installation

Measurement precautions

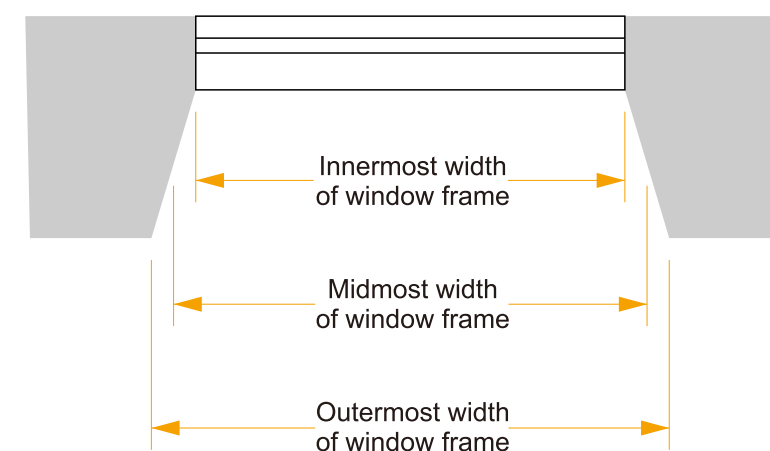
NEW100[®] | Measurement and installation

The three-point measurement takes the minimum value
The width and height are normally reduced by 2~3mm



Predicted diagonal window frames

According to the installation position of the windproof blind cover and side rails in the window frame Determine the width and height of the windproof roller blind

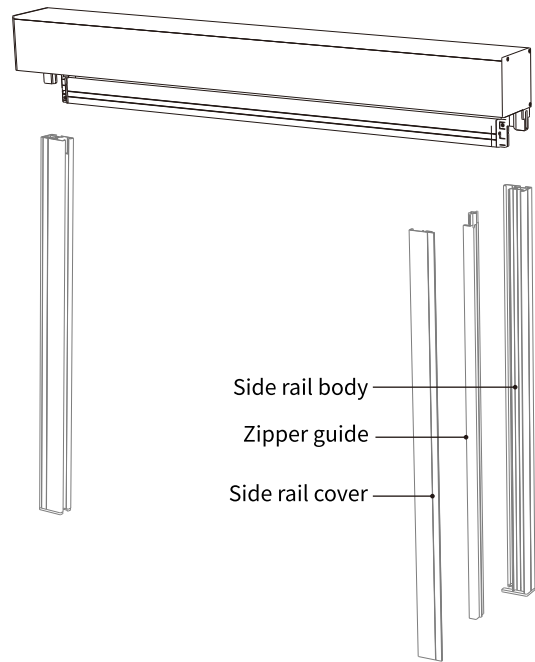


Measurement and installation

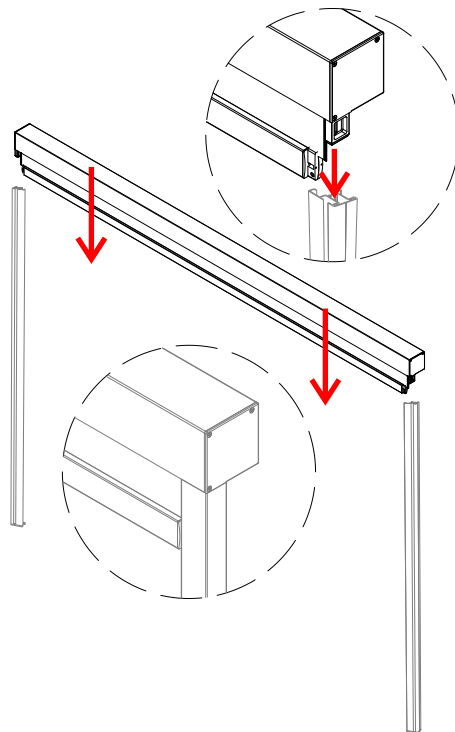
Installation procedure



- 1 Divide the two side rails into:
Side rail body, zipper guide rail, side rail cover;

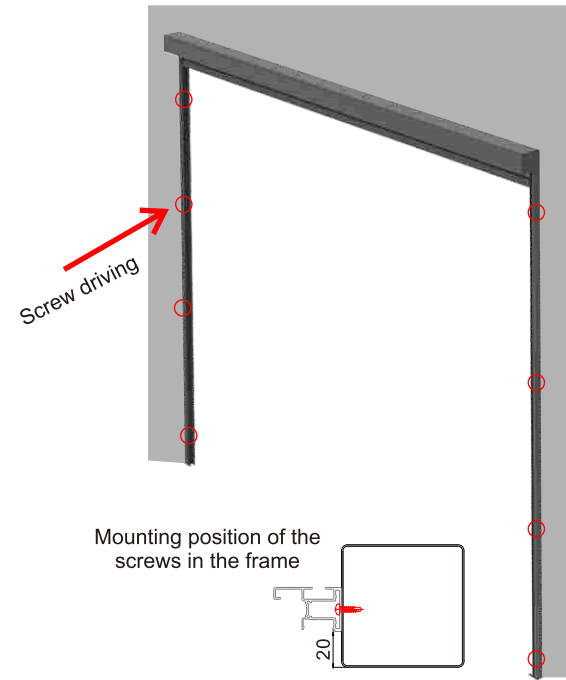


- 2 The main body of the two side rails is inserted on the end cover;



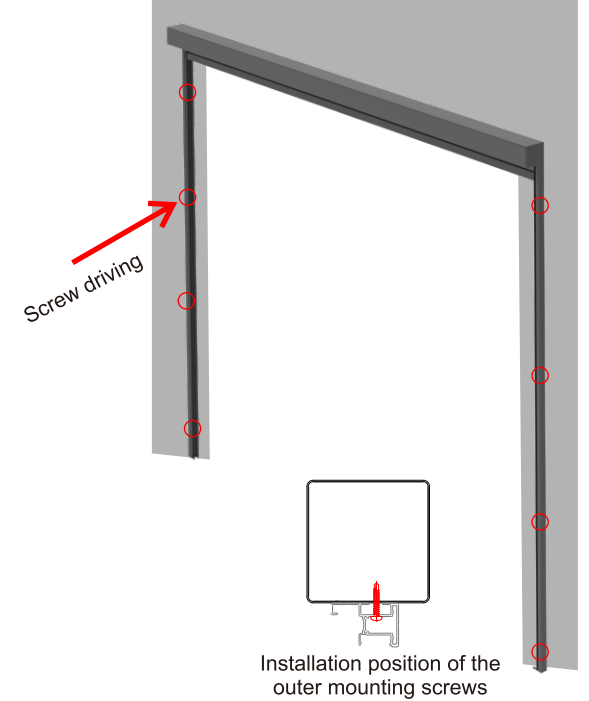
- 3 At the corresponding position of the side rail
Make the installation holes;

- 4 Put the windproof Roller blind on the frame,
Fasten with screws;

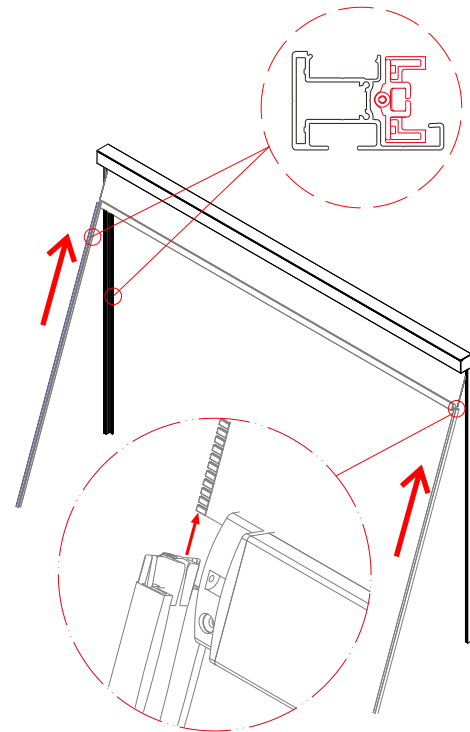


- 5 At the corresponding position of the side rail
Make the installation holes;

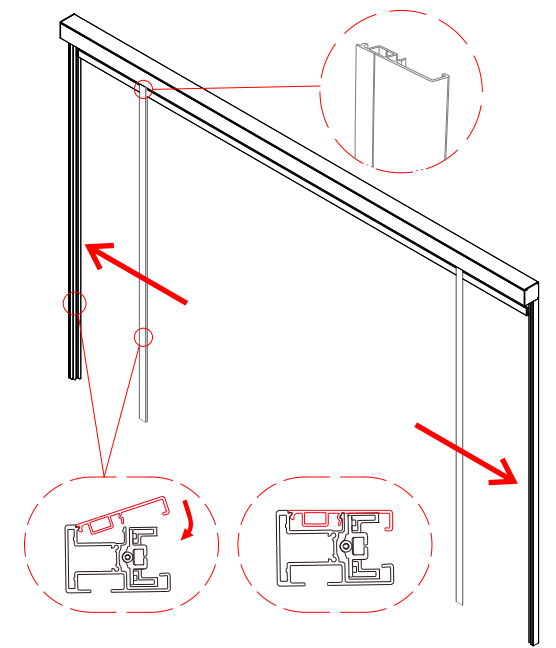
- 6 Put the windproof Roller blind on the frame,
Fasten with screws;



- 7 The zipper guide rail is installed in the side rail;
Note: The fabric zipper must be inserted into the zipper rail



- 8 Cover the side rails on both sides with the cover,
switch on the power supply roller blind flat lifting
(i.e. installation is complete)



Windproof performance test report
of windproof roller blind



NEW100[®]

CREATE THE BEST OUTDOOR
SHADING MATERIALS SUPPLIER IN CHINA

NEW100

MA 210002349119 CNAS 210002349119

检验检测报告

报告编号: SU226-2200034

样品名称: 建筑外遮阳防风卷帘

型号规格: 1500mm×1500mm WR120

委托单位: 广州市联百年科技有限公司

检验类别: 普通送样

上海建科检验有限公司
国家建筑工程材料质量检验检测中心

上海建科检验有限公司
国家建筑工程材料质量检验检测中心
检验检测报告

检验类别: 普通送样 报告编号: SU226-2200034 第1页共3页

委托编号: SU226-2200034

委托单位	广州市联百年科技有限公司	联系方式	020-36100234
单位地址	广州市白云区新市工业北路3号	委托日期	2022年5月3日
样品名称	建筑外遮阳防风卷帘	样品编号	SU226-2200034-01
生产单位	广州市联百年科技有限公司	生产日期	—
型号规格	1500mm×1500mm WR120	批号	—
样品数量	1套	代表数量	—
商标	—	检测日期	2022年5月11日
样品状态	外观完好	—	—

判定依据: GB/T 254-2015《建筑用遮阳卷帘》

检验日期: 2022年5月11日 签发日期: 2022年5月11日

检验地点: 上海市静安区南京路

检验结论: 送检样品经检验, 符合标准规定的技术要求, 判定合格。

备注: 1. 样品照片见附录3页。
2. 本报告代替检测报告 SU226-2200034。

检测: 邵晨 审核: 邵晨 编制: 邵晨

上海建科检验有限公司
国家建筑工程材料质量检验检测中心
检验检测报告

检验类别: 普通送样 报告编号: SU226-2200034 第2页共3页

委托编号: SU226-2200034

序号	检测项目	标准值	检测结果	检测方法	判定
1	抗风性能 (3级)	在≥110Pa 静压测试压力的作用下, 样品布无破损, 机构装置无松动。能正常运行。在≥112Pa 安全测试压力值作用下, 样品布无破损, 机构装置无松动, 能正常运行。	在施加 900Pa 静压测试压力和反向静压测试压力的作用下, 样品布无破损, 机构装置无松动, 能正常运行。在施加 900Pa 安全测试压力和反向安全测试压力的作用下, 样品布无破损, 机构装置无松动, 能正常运行。	JG/T 239-2009	合格
说明	—	—	—	—	—

附录3页: 上海市静安区南京路 3 号 1 幢 3 层 301 室 021-36100234 36100234

附录: 1. 以上检测报告委托方应加盖公章, 样品照片应附在报告附录3页以内。
2. 本报告仅对来样负责, 不得用于其他用途。
3. 本报告与来样照片及样品照片共同组成检测报告, 缺一不可。
4. 本报告仅对来样负责, 不得用于其他用途。
5. 本报告仅对来样负责, 不得用于其他用途。

上海建科检验有限公司
国家建筑工程材料质量检验检测中心
检验检测报告

检验类别: 普通送样 报告编号: SU226-2200034 第3页共3页

委托编号: SU226-2200034

试样照片

(本报告中内容结束)

Windproof roller blind application real case

