

W I  S L I D E R
s m ä r t

CASA2

HOUSEHOLD SLIDING DOOR

Installation manual



H O U S E H O L D S L I D I N G D O O R

Contents

Product character.....	2
Application.....	2
Technical parameter.....	2
Spare part introduction.....	3-4
Installation	5
Application of mounting bracket	6
Installation of belt connector	6
Installation of Mecahnism 1 (Use bracket).....	7-11
Installation of Mecahnism 2 (Top mounting)	12-14
Data adjustment	15-16
Setting of wireless push button.....	17
Mode of remote	17
Terminal introduction	18
Trouble shooting and solution	18

Product character

- 1.Easy for instal,without change existing door structure.
- 2.Compact size,Nice appearance and modern design.
- 3.System can apply with sensor,remote control,push button, pet switch,photocell,card reader,lock and so on.
4. 433.92hz module,can be suit with smart-home.

Application

- A. Door of kitchen and balcony.
- B. office, shop front and aisle.

Technical parameter

1*80kgs	Max door weight(single)
2*60kgs	Max door weight(double)
max1.2M	Door leaf width
100~410mm/s(Adjustable)	Opening speed
120~220mm/s(Adjustable)	Closing speed
24V40W3000rpm	Motor details
0-20s	Holding time
AC100-240V	Voltage
-10C°~50C°	Operating Temperature
2.2m, 3m(Optional)	Track length

Spare part introduction

Cover



Drive unit



Motor Controller Belt connector Belt Idler pulley

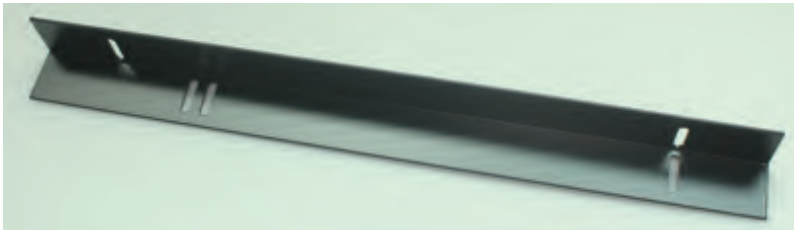


Wall mounting wireless push button



Power pack

Mounting bracket



Spare part introduction

Screw



3mm Allen key



Screw Driver



6key remote(optional)



wireless sensor (optional)



wired sensor (optional)



Install tools

Saw



Pistol Drill

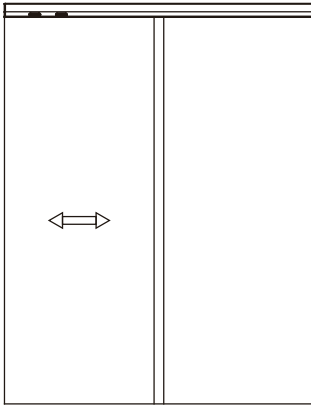


Pencil

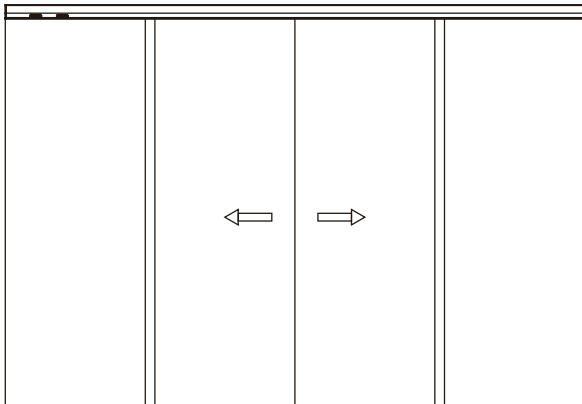


Installation

Single open



double open



Application of mounting bracket



Installation of belt connector

Two install method of belt connector, default installation is method 1

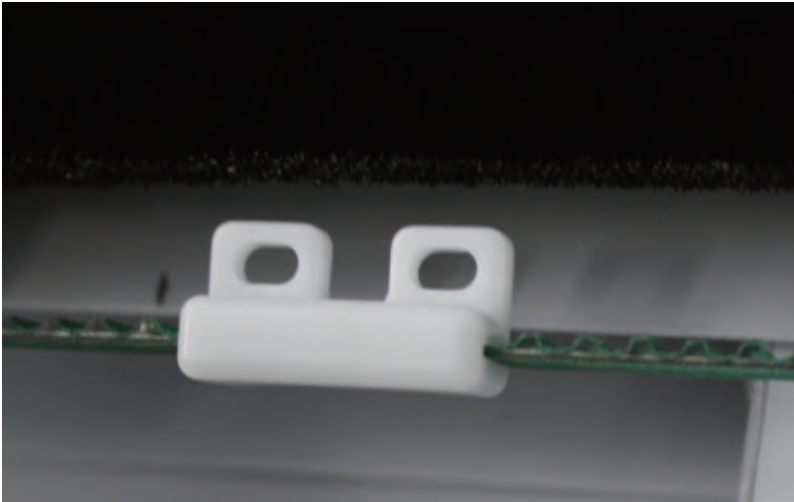


Installation of Mecahnism 1 (Use bracket)

1.Move the operator to ensure the belt connector well fix and tighten on the door leaf

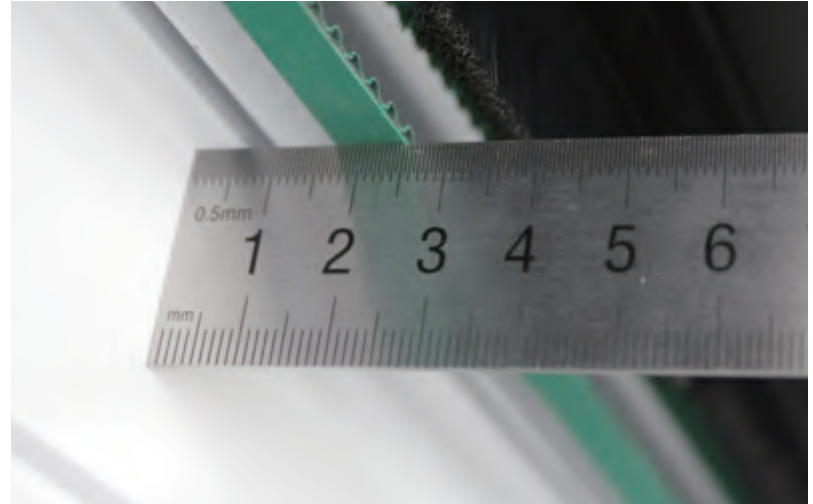


2.Remove the metal part from belt connector



Installation of Mecahnism 1 (Use bracket)

3.Move the operator to ensure the distance between door leaf and belt is around 17mm



4.Tighten the screw on the install plate



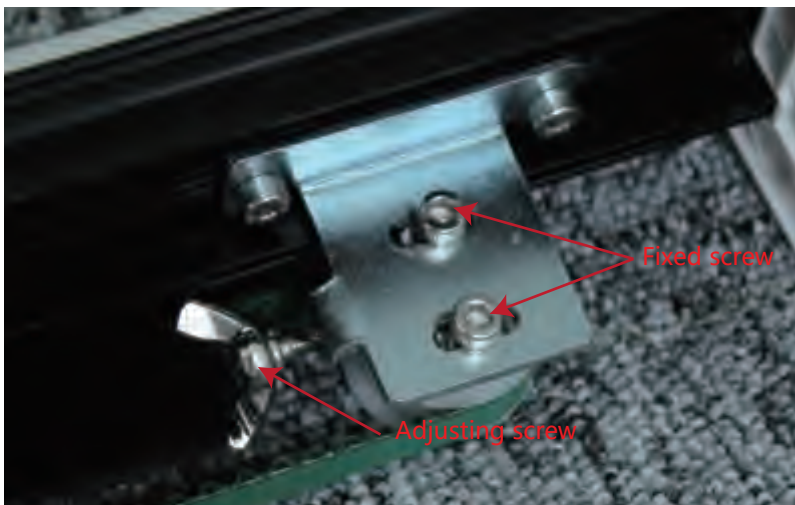
Installation of Mecahnism 1 (Use bracket)

5. Move the belt connector to the middle of door leaf , connect the door with belt connector



6. Tension adjustment

Loosen the fix screw , adjust the belt tension by tighten adjustment screw clockwise



Installation of Mecahnism 1 (Use bracket)

7. Install the wireless push button according to requested position



8. Full view after installation



Installation of Mecahnism 1 (Use bracket)

9. Power on and adjust the operator (refer to page 16)



10. Put on cover of operator after adjustment

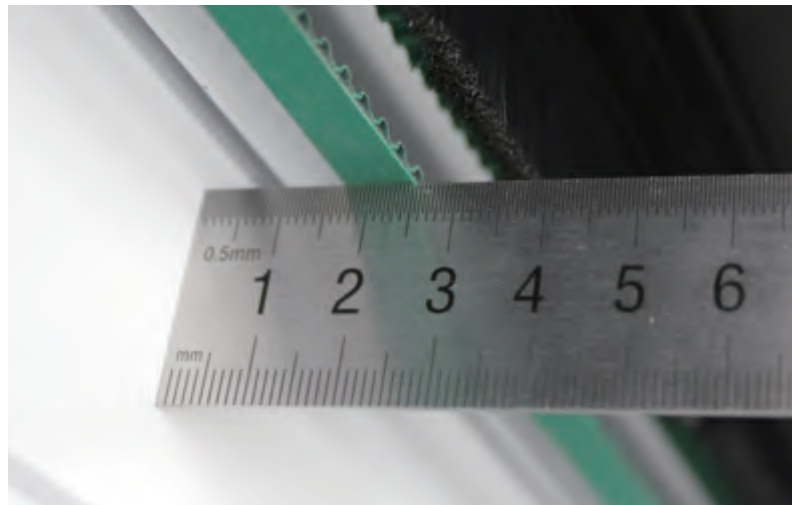


Installation of Mecahnism 2 (Top mounting)

1. Cut the length of operator refer to door size (Reduce 5cm from door size)
2. Put the operator to correct position (refer to the Pic) , leave 5cm on the left And make sure the right side close to door



3. The distance between belt and door leaf is around 17mm



Installation of Mecahnism 2 (Top mounting)

4.Tighten the screw after install position is confirmed



5.move the belt connector to the middle of door leaf and ensure horizontal , then tighten screw



Installation of Mecahnism 2 (Top mounting)

6.Power on and adjust the operator (refer to page 16)



Data adjustment



Speed: adjustment of speed: open 10-41cm/S , Close 12-22cm/s

Slam mode: opening speed under 80%, open and close speed is same, opening speed higher than 80%, closing speed is half of opening

Without rubber: opening speed lower 50%, open and close speed is same, opening speed higher than 50%, closing speed is half of opening







Opening time: 0-20s (adjustable)

Learning button: Learning button of remote or wireless push button, added and delete remote process

Learning led: Remote learning indicator

There are five Mode available



-  Automatic: the door will open when a sensor is triggered and close after the preset dwell time has elapsed (all signal working normal).
-  Hold open mode: the door will open and remain open until another mode is select
-  Lock mode: Door will close and remain closed until another mode is select by remote System will lock if there is a E-lock connect to it (In that mode, only remote signal is Available)
-  Pet mode: For use with pet sensors and when a pet opening width has been set (see below). Will open the door to the pet opening width when any pet sensor is triggered and close after the preset dwell time has elapsed;
-  manual model: the door can be manually operated, the system will not drive the door
-  Function select button

Data adjustment

DIP function introduction and setting

DIP switch	On (upwards)	Off(downwards)
1.Direction L/R	ON – Left opening, OFF – Right opening. Toggle (back and forth) to erase memory and re-learn open/close cycle.	
2.Toggle mode	Activate to open activate to close	Normal mode
3. Beeper *	Beeper enabled	Beeper disable
4.Push and go	on	off
5.Lock mode	Automatic lock after full closed	Lock only with full lock signal
6.Slam shut	With rubber	Normal operation

DIP Switch 1 must power off and restart can switch mode

*This dip switch can only turn off the voice of remote , If need turn off the voice of wireless push button,it should press learning button , then switch on or off

Learning process:

Turn on the power switch,ensure dip 1 is correct, if direction is wrong, Please switch the dip to opposite direction, turn off the power and make sure door fully closed,Then power on

● Opening width learning (pet) :

Pet mode indicator flash,door will start to open slowly ,Put obstacle at the position u need , after short pause , door will close slowly , the learning process will done after door fully close , standard opening width learning

● All mode indicator flash, door:

Will open and close slowly , when door is fully close and automatic mode indicator lighting , learning process is done , controller is with memory of opening width

Terminal introduction

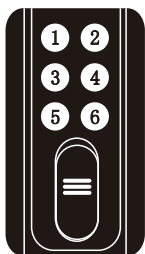
(Tip: Ensure keep pressing learning button when delet remote memory)



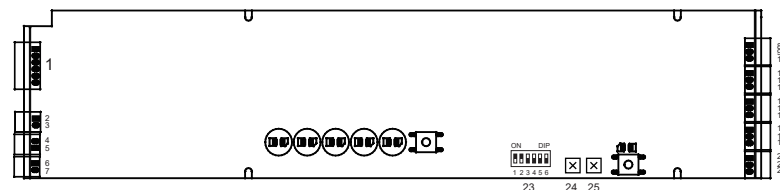
- 1.Remove battery
- 2.Keep pressing "setting" button
- 3.Insert the battery at same time, the red led flash
- 4.Keep pressing Button B , the red led off about 5 second, then flash again
- 5.Release Setting button and B button, setting is done

Pw cut memory function:

Mode of remote



Door mode:1 automatic 2 Hold open 3 Lock
4 Pet 5 manual 6 toggle



- | | | |
|------------------------------------|-------------------------------|----------------------------------|
| 1. Motor terminal | 10. GND | 19. GND |
| 2. DC24V+ | 11. Photocell signal terminal | 20. Pet signal terminal |
| 3. GND | 12. DC13V+ | 21. DC13V+ |
| 4. UPS+ | 13. GND | 22. GND |
| 5. UPS- | 14. Inside sensor | 23. Function select dip switch |
| 6. E-Lock- | 15. DC13V+ | 24. Open speed adjust knob |
| 7. E-Lock+ | 16. GND | 25. Opening time adjustment knob |
| 8. Function select signal terminal | 17. Outside sensor | |
| 9. DC13V+ | 18. DC13V+ | |

Trouble analysis and Solution

SYMPTOM	CAUSE	SOLUTION
Door does not open fully after learn cycle	Incomplete learn cycle	Remove the external cover (if already fitted). Turn the system off at the controller switch. Close the door manually. Keep press function selector button and turn on the switch of controller. after heard Voice bi , Test again after the learn cycle has completed. Refit external cover.
Door can not full lock, door Door can not full lock, door open again after close	Not well suit of gear and rack	Check and adjust the suit condition of gear and rack, turn off the switch of controller, close the door manually, restart the system, Test again after learn cycle has completed , Refit external cover
Door can not not fully open and close	There is resistance between system and door	Turn DIP 6 to rubber mode
Door stop at the open or close process , full lock and pet indicators flash	There is resistance between system and door	Find the resistance item and remove it
Door open without any commander	Cause1: remote signal interference Cause2: sensor setting is too sensitive	Solution 1: open cover, delet all remote memory and setting again Solution 2: take off the cover of sensor , adjust sensitive by knob
Door can not open	Door is lock by E-lock	U-lock the system